

Product overview



Axial fans



Supply airflow at low system pressures. Complete fan packages provide easy mounting, minimal depth, low noise and high efficiency. Electronically commutated external-rotor motor with integrated electronics.

Applications: Condensers, horticulture, industrial and commercial air conditioners, livestock ventilation, motor/engine cooling, mobile refrigeration

Markets: Agriculture, Air-conditioning, Commercial Refrigeration, Data Center, Industrial, Transportation, Mobile, Rail, Ventilation

Size: Ø 7.9 in. to 63 in. (200 mm to 1,600 mm)

CFM: 100 to 49,500

Static pressure: 0.16 in.H₂O to 2.5 in.H₂O

Accessories: AxiTop™, FlowGrid

Backward curved motorized impellers



Supply air flow at medium system pressure; air is drawn in over the motor and then discharged radially. Electronically commutated external-rotor motor with integrated electronics.

Applications: Cleanrooms, exhaust systems, routers, telecom equipment, mobile refrigeration, HVAC, engine cooling

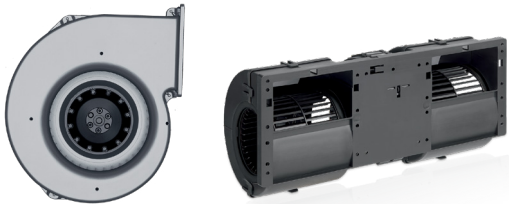
Markets: Data Center, IT / Telecom, Transportation, Ventilation, Rail

Size: Ø 3.94 in. to 35.4 in. (133 mm to 900 mm)

CFM: 50 to 21,780

Static pressure: 0.4 in.H₂O to 10.3 in.H₂O

Centrifugal blowers



Suitable for applications with relatively high pressures. External rotor motor combined with a forward curved centrifugal wheel within a scroll housing.

Applications: Exhaust systems, range hoods, machine cooling

Markets: Air-conditioning, Appliance, Industrial, Transportation, Ventilation

Size: Ø 3.35 in. to 15.9 in. (85 mm to 404 mm)

CFM: 26 to 5,600

Static pressure: 0.2 in.H₂O to 4.5 in.H₂O

Compact fans



Compact, quiet and highly efficient energy-saving fans. Available for all voltages and in all standard sizes.

Applications: Automotive seat and electronics cooling, medical equipment, power supplies, printers/copiers, refrigerated display cases, routers, servers, warming ovens

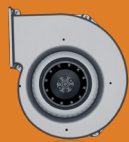
Markets: Appliance, Automotive, Data Center, Industrial, IT / Telecom, Medical, Refrigeration

Size: Ø 1 in. to 11 in. (25 mm to 280 mm)

CFM: 1.2 to 1,218

Static pressure: 0.04 in.H₂O to 5.6 in.H₂O

Accessories: Connecting cables, filters, finger guards, screens, spacers and temperature sensors



Product overview

Energy-saving motor (ESM) fans



Two speed, user programmable, reversible, energy efficient complete fan packages. Line powered energy efficient EC brushless motors and also DC versions with infinitely variable speed control via analog signal or ModBus communication. 100 - 240VAC wide voltage range available on select models. Safe for use with hydrocarbon refrigerants.

Applications: Display cases, vending machines, bottle coolers, freezers, unit coolers

Markets: Commercial Refrigeration

Size: Ø 6 in. to 12 in. (152mm to 305mm)

CFM: 100 to 825

Static pressure: 0.09 in.H₂O to 0.65 in.H₂O

Accessories: HX0C-003-000-02 full featured programmer
HX0C-006-000-03 two-speed programmer

FlatPak® blowers



Flat, low-noise, pressure-resistant fans developed for installations of equipment within compact space.

Applications: Electronic, medical equipment, power supplies, routers, servers

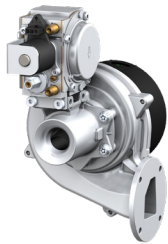
Markets: Data Center, Industrial, IT / Telecom, Medical

Size: 2 in. to 8.7 in. (50 mm to 220 mm)

CFM: 5.7 to 261

Static pressure: 0.4 in.H₂O to 5.5 in.H₂O

Gas blowers & complete combustion systems



Components and systems that allow for a measured air-fuel mixture to be delivered to the burner for optimum combustion.

Applications: Gas fired boilers, water heaters, power burners, commercial food equipment, steam humidifiers

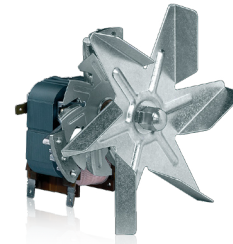
Markets: Heating and appliance

Size: Impeller diameters ranging from Ø 2.80 in. to 17.72 in. (71 mm to 450 mm)

Note: Energy input rate up to 13.6MM BTU/H (4MW) to 6.8M BTU/H (2MW)

Static pressure: up to 20 in wc (5000 Pa)

Hot air blowers



Feature an AC or EC motor mounted outside the hot area and a radial impeller made of sheet steel, stainless steel, or die-cast aluminum for mounting in the hot area.

Applications: Residential and commercial convection ovens

Markets: Appliance, Heating, Industrial

Size: Ø 4.7 in. to 8.9 in. (119 mm to 226 mm)

CFM: Up to 418 cfm (710 m³/h)

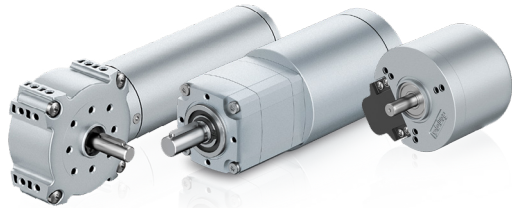
Static pressure: up to 12 in. wc (3000 Pa)

Note: Motor supplied bundled with blade, nut and washer

Product overview



Motors & Drives



Modular drive systems. Motors with integrated logic and power electronics - optional gearhead, encoder, and brake.

Applications: Conveyors, turnstiles, patient lifter, ceiling lifter, wheelchairs, pumps, transfer systems, actuators, feeder units, dialysis machines, surgical tables, stirrer / shaker, circuit breakers, pellet heating systems, autonomous guided vehicles, sorters, windshield wipers, doors, barriers, packaging machines, blinds, rotational heat exchanger, shutters, seeding machines, wood working machines

Markets: Agriculture, Automotive, Industrial, Medical, Intralogistics, Access Control, Transportation, Factory Automation
Size: 1.65 in. to 3.14 in. (42 mm to 80 mm)

RadiPac™



Single inlet, direct drive, centrifugal impeller with an electronically commutated external-rotor motor with integrated electronics; backward curved impeller blades.

Applications: Air handing units, condensing units, energy recovery systems (ERV), packaged rooftop units

Markets: Air-conditioning, Data Center, Industrial, Ventilation

Size: Ø 9.8 in. to 39.4 (249 mm to 1000 mm)

CFM: 700 to 22,000

Static pressure: 1.35 in.H₂O to 10.3 in.H₂O

Accessories: FlowGrid, instrumented inlet rings

Tangential blowers



Provide even, low velocity airflow over a wide area. Feature a narrow footprint and are available in many different lengths.

Applications: Gas fireplaces, gas, pellet, and wood stoves, kitchen appliance cooling, trench heating, and industrial cabinet ventilation.

Markets: Appliance, Heating, Industrial

Size: 11.8 in. to 32.4 in. (300 mm to 823 mm)

Impeller diameters: 1.2 in to 3.1 in (30 mm to 80 mm)

Impeller lengths: 4.7 in to 32.4 in (120 mm to 823 mm)

Optional: Cascade impeller assemblies for under floor ventilatio

CFM: up to 649 cfm (1100 m³/h)

Static pressure: up to 0.44 in wc (110 Pa)

Accessories



Products designed to optimize performance.

Accessory: FlowGrid, AxiTop, fan guards, capacitors, cord sets, programmers