



FORTIFYING SECURITY WITH AI SOFTWARE

Introducing Astrophysics Artificial Intelligence (AI) software – for detection of guns, sharps, liquids and lithium batteries. Astrophysics AI software reduces the burden on operators, accelerates decision times, boosts threat detection, and fortifies security.

To facilitate efficient analysis, Astrophysics AI is integrated into our software to automatically stop the conveyor belt when a threat is detected and identify threat(s) with a red box. The intuitive software design enables operators to confidently utilize AI software and the automated assistance supports training of new personnel.

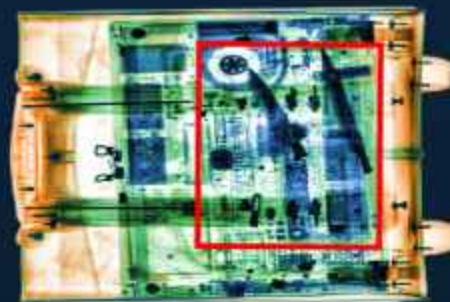
Our “deep learning” AI algorithms continuously improve as they analyze more images, creating a growing catalog of identified threats. Astrophysics AI is available on both new and existing XIS systems deployed at prisons, courthouses, stadiums, logistics centers and more. Astrophysics AI provides protection against critical threats at sites worldwide, bringing security to the next level.

THREATS ARE HIGHLIGHTED IN A RED BOX

BELT AUTOMATICALLY STOPS WHEN
THREAT IS DETECTED

AVAILABLE ON NEW AND DEPLOYED XIS
CHECKPOINT AND LARGE BAGGAGE SYSTEMS

NO TRAINING REQUIRED



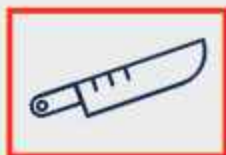
TOMORROW'S TECHNOLOGY FOR TODAY'S SECURITY™



AUTOMATED TECHNOLOGY FOR MODERN THREAT DETECTION



GUNS



SHARPS



LIQUIDS



LITHIUM BATTERIES



PHOTO: ASTROPHYSICS INC.

CUSTOM THREAT DEVELOPMENT

Contact Astrophysics to learn about custom development of AI detection for specific threats.



www.astrophysicsinc.com
sales@astrophysicsinc.com
+1.909.598.5488

XIS-6545DVS™

PRODUCT HIGHLIGHTS

Artificial Intelligence (AI)

Dual 180kV Generators

Enhanced Imaging™

Windows® Operating System
with Intel® Core™ Processor

Modular Design



PRODUCT DESCRIPTION

The XIS-6545DVS™ is an advanced modular designed X-Ray Inspection System (XIS) with more power than any competing scanner in its tunnel size. The ultimate in power and convenience, the XIS-6545DVS™ features dual 180kV generators including a side-mounted x-ray generator that can be disassembled and quickly reassembled on-site for simplified installation in confined spaces.

ABOUT ASTROPHYSICS

Since 2002, Astrophysics has led the industry in research and development, creating integrated solutions to advance the critical security missions of our customers and partners. Headquartered outside of Los Angeles, CA in the USA, Astrophysics has over 40,000 systems deployed in more than 150 countries, safeguarding critical infrastructure, aviation, and ports and border sites worldwide.

XIS-6545DVS™

GENERAL SPECIFICATIONS

Tunnel Size: (WxH)	65.0 cm x 45.2 cm 25.6" x 17.8"
Dimensions: ¹ (LxWxH)	204.0 cm x 128.2 cm x 135.0 cm 80.3" x 50.5" x 53.1"
Shipping Dimensions: ² (LxWxH)	228.6 cm x 139.7 cm x 165.1 cm 90.0" x 55.0" x 65.0"
Net Weight: ³	975 kg (2130 lbs)
Shipping Weight: ³	1100 kg (2425 lbs)
Conveyor Speed:	23 cm/s (45 ft/min) Forward or Reverse
Conveyor Height:	71.9 cm (28.3") from Floor
Conveyor Capacity:	165 kg (364 lbs) Evenly Distributed Load

X-RAY GENERATOR & IMAGE PERFORMANCE

Voltage:	Dual 180kV, Operating at 165kV
Tube Current:	Dual 1.2 mA
Wire Resolution: ⁴	41 AWG Typical, 40 AWG Standard
Steel Penetration: ⁴	41 mm Typical, 39 mm Standard
Cooling:	Sealed Di-Electric Oil Bath with Forced Air
Duty Cycle:	100%, No Warm-Up Procedure Required
Beam Direction:	Diagonally Upward and Sideward

COMPUTER & VIDEO

Platform:	Windows® 10 OS
Memory:	8 GB RAM
Storage Capacity:	256 GB SSD
Display Type:	Dual 21.5" Flat Panel Monitors
Display Resolution:	1920 x 1080

ENVIRONMENTAL

Operating Temperature:	0°C to 40°C / 32°F to 104°F
Storage Temperature:	-20°C to 60°C / -4°F to 140°F
Humidity:	Up To 95% Non-Condensing

ELECTRICAL

System Power:	110 VAC +/- 10% 50/60Hz, 20 Amp Max 220VAC +/- 10% 50/60Hz, 15 Amp Max
Power Conditioner:	Uninterruptible Power Supply (UPS) (Computer Operation)

HEALTH & SAFETY

Compliant with USFDA Center for Devices and Radiation Health Standards for Cabinet X-Ray Systems (21-CFR 1020.40)
Typical Radiation leakage is less than 0.1 mR/hr
(Leakage less than 0.5 mR/hr permitted by U.S. Federal Standards)

ISO 9001 & ISO 14001 CERTIFIED



¹Weight and dimensions of the system may vary depending on customization.

²As tested on Astrophysics Inc. Test Piece.

³Optional Features may affect lead time, price, and weight of product. Please contact your Astrophysics Sales Representative for more information.

Due to continued product development, Astrophysics Inc. reserves the right to amend all technical specifications without prior notice.
Contact sales@astrophysicsinc.com for the most updated brochures.

FEATURES

STANDARD

3 & 6 Color Imaging
Black & White Imaging
Enhanced Imaging™
High Penetration Function
Organic/Inorganic Imaging
Pseudo Color
Reverse Monochrome

Atomic Z-Number Measurement
Distortion Correction
Geometric Image
Material Discrimination
Real-Time Image Manipulation

Auto Image Archiving
Image Review
Save Image (RGB)

Baggage Counter
Multi-Tier Accessibility
Network Ready
Real-Time Self Diagnostics

Image Annotation
JPEG Conversion
Print Image Capable

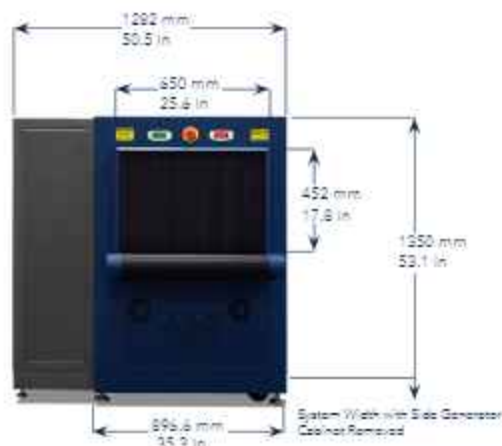
9 Quadrant Zoom
Continuous Scanning
Continuous Zoom Up to 64x
Vertical Zoom Panning

OPTIONAL

Barcode Scanning
Density Alert
Local Language
Safe Passage® Computer Based Training
Screener Assist Software
Test Case
Threat Image Projection (TIP) Software

Conveyor Capacity Load Increase
External USB Ports
Variable Conveyor Speed

Dual 24" Flat Panel Monitors
Custom Print
Environmental Kit
Entry/Exit Roller Tables
Footmat Operator Interlock
Mobility Kit
Roller Bed
Radiation Meter
Remote Workstation Configuration
Sloped Conveyor
Artificial Intelligence (AI)



CHECKPOINT

Astrophysics HQ
+1.909.598.5488

Astrophysics – EMEA
+961.9.832.500

Astrophysics – INDIA
+91.11.41709990

Astrophysics – ASIA
+63.2.812.0033

XIS-100XDV™



PRODUCT HIGHLIGHTS

Artificial Intelligence (AI)

Enhanced Imaging™

Windows® Operating System with
Intel® Core™ Processor

Dual 180kV Generators

Modular Design



PRODUCT DESCRIPTION

The XIS-100XDV™ is a dual-view X-Ray Inspection System (XIS) providing two distinct views for superior threat detection of baggage and large parcels at high-security locations. This dual-view system includes a side-mounted x-ray generator with a modular design allowing it to be disassembled and quickly reassembled on-site for ease of installation in confined spaces.

ABOUT ASTROPHYSICS

Since 2002, Astrophysics has led the industry in research and development, creating integrated solutions to advance the critical security missions of our customers and partners. Headquartered outside of Los Angeles, CA in the USA, Astrophysics has over 40,000 systems deployed in more than 150 countries, safeguarding critical infrastructure, aviation, and ports and border sites worldwide.

XIS-100XDV™

GENERAL SPECIFICATIONS

Tunnel Size: (WxH)	100.3 cm x 100.1 cm 39.5" x 39.4"
Dimensions: ¹ (LxWxH)	303.1 cm x 176.6 cm x 197.8 cm 119.4" x 69.5" x 77.9"
Shipping Dimensions: ¹ (LxWxH)	345.4 cm x 194.3 cm x 224.8 cm 136.0" x 76.5" x 88.5"
Net Weight: ¹	1565 kg (3450 lbs)
Shipping Weight: ¹	1746 kg (3850 lbs)
Conveyor Speed:	23 cm/s (45 ft/min) Forward or Reverse
Conveyor Height:	76.8 cm (30.2") from Floor
Conveyor Capacity:	220 kg (485 lbs) Evenly Distributed Load

X-RAY GENERATOR & IMAGE PERFORMANCE

Voltage:	Dual 180kV, Operating at 165kV
Tube Current:	Dual 1.2 mA
Wire Resolution: ²	40 AWG Typical, 38 AWG Standard
Steel Penetration: ²	39 mm Typical, 37 mm Standard
Coating:	Sealed Di-Electric Oil Bath with Forced Air
Duty Cycle:	100%, No Warm-Up Procedure Required
Beam Direction:	Diagonally Upward, Horizontally Sideward

COMPUTER & VIDEO

Platform:	Windows® 10 OS
Display Type:	Dual 24" Flat Panel Monitors
Display Resolution:	1920 x 1200
Memory:	8 GB RAM
Storage Capacity:	256 GB SSD

ENVIRONMENTAL

Operating Temperature:	0°C to 40°C / 32°F to 104°F
Storage Temperature:	-20°C to 60°C / -4°F to 140°F
Humidity:	Up to 95% Non-Condensing

ELECTRICAL

System Power:	110VAC +/- 10% 50/60Hz, 20 Amp Max 220 VAC +/- 10% 50/60Hz, 15 Amp Max
Power Conditioner:	Uninterrupted Power Supply (UPS) (Computer Operation)

HEALTH & SAFETY

Compliant with USFDA Center for Devices and Radiation Health Standards for Cabinet X-Ray Systems (21-CFR 1020.40)
Typical radiation leakage is less than 0.1 mR/hr
(Leakage less than 0.5 mR/hr permitted by U.S. Federal Standards)

ISO 9001 & ISO 14001 CERTIFIED



¹Weight and dimensions of the system may vary depending on customization.

²As tested on Astrophysics Inc. Test Piece.

³Optional Features may affect lead time, price, and weight of product. Please contact your Astrophysics Sales Representative for more information.

Due to continued product development, Astrophysics Inc. reserves the right to amend all technical specifications without prior notice. Contact sales@astrophysicsinc.com for the most updated brochures.

FEATURES

STANDARD

8 & 6 Color Imaging
Black & White Imaging
Enhanced Imaging™
High Penetration Function
Organic/Inorganic Imaging
Pseudo Color
Reverse Monochrome

Atomic Z-Number Measurement
Geometric Image Distortion Correction
Material Discrimination
Real-Time Image Manipulation

Auto Image Archiving
Image Review
Save Image (RGB)

Baggage Counter

Image Annotation
JPEF Conversion
Print Image Capable

Multi-Tier Accessibility
Network Ready
Real-Time Self Diagnostics

9-Quadrant Zoom
Continuous Scanning
Continuous Zoom Up to 64x
Vertical Zoom Panning

OPTIONAL

Barcode Scanning
Density Alert
Local Language
Safe Passage® Computer Based Training
Screener Assist Software
Test Case
Threat Image Projection (TIP) Software

Central Management System
Integration
Multiplexing

Conveyor Capacity Load Increase
External USB Ports
Variable Conveyor Speed

Custom Paint
Entry/Exit Roller Tables
Environmental Kit
Sloped Conveyor

Footrest Operator Interlock
Roller Bed

Radiation Meter
Remote Workstation Configuration
Artificial Intelligence (AI)



HOLD BAGGAGE

Astrophysics HQ
+1.909.598.5488

Astrophysics – EMEA
+961.9.832.500

Astrophysics – INDIA
+91.11.41709990

Astrophysics – ASIA
+63.2.812.0033

sales@astrophysicsinc.com | www.astrophysicsinc.com | service@astrophysicsinc.com

XIS-100XD™



PRODUCT HIGHLIGHTS

Repositioned Generator and Low Conveyor

Slim Profile Maintains Minimal Footprint

Windows® Operating System with
Intel® Core™ Processor:

Artificial Intelligence (AI)

Enhanced Imaging™



PRODUCT DESCRIPTION

The XIS-100XD™ is a compact X-Ray Inspection System (XIS) designed for screening large baggage and heavy cargo. Reconfigured with a symmetrical downshooter generator, the XIS-100XD™ features a low conveyor height of only 30 cm (12") above the ground, to speed the loading and unloading of freight. Its unique design provides a slim operational profile and generates crisp, detailed images.

ABOUT ASTROPHYSICS

Since 2002, Astrophysics has led the industry in research and development, creating integrated solutions to advance the critical security missions of our customers and partners. Headquartered outside of Los Angeles, CA in the USA, Astrophysics has over 40,000 systems deployed in more than 150 countries, safeguarding critical infrastructure, aviation, and ports and border sites worldwide.

XIS-100XD™

GENERAL SPECIFICATIONS

Tunnel Size: (WxH)	100.9 cm x 100.0 cm 39.7" x 39.4"
Dimensions: ¹ (LxWxH)	239.5 cm x 127.5 cm x 191.0 cm 94.3" x 50.2" x 75.2"
Shipping Dimensions: ¹ (LxWxH)	297.2 cm x 145.5 cm x 223.5 cm 90.0" x 57.3" x 88.0"
Net Weight: ¹	794 kg (1730 lbs)
Shipping Weight: ¹	930 kg (2050 lbs)
Conveyor Speed:	23 cm/s (45 ft/min) Forward or Reverse
Conveyor Height:	30.0 cm (12.0") from Floor
Conveyor Capacity:	220 kg (485 lbs) Evenly Distributed Load

X-RAY GENERATOR & IMAGE PERFORMANCE

Voltage:	180kV, Operating at 165kV
Tube Current:	1.2 mA
Wire Resolution: ²	40 AWG Typical, 38 AWG Standard
Steel Penetration: ²	37 mm Typical, 35 mm Standard
Cooling:	Sealed Di-Electric Oil Bath with Forced Air
Duty Cycle:	100%, No Warm-Up Procedure Required
Beam Direction:	Vertically Downward

COMPUTER & VIDEO

Platform:	Windows® 10 OS
Display Type:	Dual 24" Flat Panel Monitors
Display Resolution:	1920 x 1200
Memory:	8 GB RAM
Storage Capacity:	256 GB SSD

ENVIRONMENTAL

Operating Temperature:	0°C to 40°C / 32°F to 104°F
Storage Temperature:	-20°C to 60°C / -4°F to 140°F
Humidity:	Up to 95% Non-Condensing

ELECTRICAL

System Power:	110VAC +/- 10% 50/60Hz, 15 Amp Max 220 VAC +/- 10% 50/60Hz, 10 Amp Max
Power Conditioner:	Automatic Voltage Regulator (AVR)

HEALTH & SAFETY

Compliant with USFDA Center for Devices and Radiation Health Standards for Cabinet X-Ray Systems (21-CFR 1020.40)
Typical radiation leakage is less than 0.1 mR/hr
(Leakage less than 0.5 mR/hr permitted by U.S. Federal Standards)

FEATURES

STANDARD

3 & 6 Color Imaging
Black/White Imaging
High Penetration Function
Enhanced Imaging™
Organic/Inorganic Imaging
Pseudo Color
Real-Time Image Manipulation
Reverse Monochrome

Atomic Z-Number Measurement
Geometric Image Distortion Correction
Material Discrimination

Auto Image Archiving
Image Review
Save Image (RGB)

Baggage Counter
Image Annotation
JPEG Conversion
Multi-Tier Accessibility
Network Ready
Print Image Capable
Real-Time Self Diagnostics

9 Quadrant Zoom
Continuous Scanning
Continuous Zoom Up to 64x
Vertical Zoom Panning

OPTIONAL

Artificial Intelligence (AI)
Barcode Scanning
Density Alert
Local Language
Safe Passage® Computer-Based Training
Screening Assist Software
Test Case
Threat Image Projection (TIP) Software

Central Management System
Integration
Multiplexing

Conveyor Capacity/Load Increase
External USB Ports
Variable Conveyor Speed

Footmat Operator Interlock
Roller Bed

Internal/External UPS
Mobility Kit
Radiation Meter
Remote Workstation Configuration

Custom Paint
Entry/Exit Roller Tables
Environmental Kit



ISO 9001 & ISO 14001 CERTIFIED



¹Weight and dimensions of the system may vary depending on customization.

²As tested on Astrophysics Inc. Test Piece.

³Optional Features may affect lead time, price, and weight of product. Please contact your Astrophysics Sales Representative for more information.

Due to continued product development, Astrophysics Inc. reserves the right to amend all technical specifications without prior notice.
Contact sales@astrophysicsinc.com for the most updated brochures.



Astrophysics HQ
+1.909.598.5488

Astrophysics – EMEA
+961.9.832.500

Astrophysics – INDIA
+91.11.41709990

Astrophysics – ASIA
+63.2.812.0033

sales@astrophysicsinc.com | www.astrophysicsinc.com | service@astrophysicsinc.com

REMOTE WORKSTATION GUIDELINES

To meet a diverse range of security and logistical needs, Astrophysics offers three remote workstation options: the Standard Remote Workstation, Suspect Search Workstation, and Supervisor Workstation. These workstations can be configured with operating distances of 15, 100, or 200 feet (4.5, 30.5, 61 meters) from the X-ray Inspection System (XIS).



Standard Remote Workstation:

- Designed for congested sites where direct inspections are not effective options.
- Operators can view and manipulate the system from a controlled area free of noise, foot traffic, or other interference, thus improving throughput and threat detection.
- A Standard Remote Workstation is included with all scanners larger than the XIS-7858 (available options on smaller scanners).
- Includes: Dual LCD Monitors*, Operator Control Panel, Work Table, and Extension Kit.



Suspect Search Workstation:

- Receives images from Operators and allows for secondary image analysis of potential threats that may have passed through the initial screening process.
- Allows Operators to continue screening while the Suspect Search Station Reviewer conducts a detailed examination of the suspected image.
- Maximizes throughput without sacrificing inspection thoroughness.
- Includes: Dual LCD Monitors*, Operator Control Panel, Windows PC, and Work Table.



Supervisor Workstation:

- Allows Supervisors and Administrators to monitor multiple XIS scanners to ensure efficient screening operations.
- Displays the desktops of all networked Operators giving Supervisors the ability to intervene during screening (if necessary).
- Supervisors are linked to all XIS systems and can adjust accessibility of all XIS users including adding/removing Operators, setting passwords, and arranging shift schedules.
- Includes: LCD Monitor*, Keyboard, Mouse, Windows PC, and Work Table.

Features	Standard Remote Workstation	Suspect Search Station	Supervisor Workstation
LCD Monitors	✓	✓	✓
Advanced Operator Control Panel (AOCP)	✓	✓	✗
Heavy Duty Table	✓	✓	✓
Keyboard/Mouse	✗	✗	✓
Add/Delete User	✗	✓ ★	✗
Annotate Image	✓	✓	✗
Archive Image	✓	✗	✗
Change Time	✗	✓ ★	✗
Control Belt	✓	✗	✗
Edit User Information	✗	✓ ★	✗
Enable/Disable CBT	✓ ★	✗	✓
Enable/Disable SA	✓ ★	✗	✓
Enable/Disable TIP	✓ ★	✗	✓
Manipulate Image	✓	✓	✗
Network Ready	✓	✓	✓
Receive Image	✗	✓ ▲	✗
Review Image	✓	✓	✗
Scan Image	✓	✗	✗
Set Operator Accessibility	✗	✓ ★	✗
Set Passwords	✓ ★	✗	✓
View Diagnostics	✓	✗	✓
View Other Remote Workstations	✗	✗	✓
View Other Suspect Search Workstations	✗	✗	✓

✓ Standard Feature

✗ Not Included

★ Administrator Access

▲ On Demand



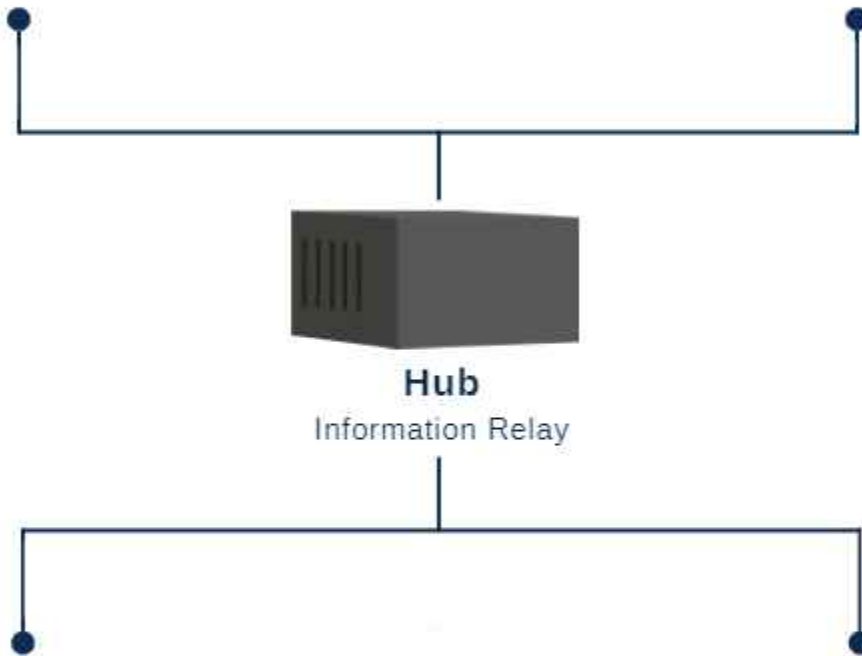
Suspect Search Station

Secondary Review of WIM Files (Raw Data)



Supervisor Workstation

Administrative Control, Capture Desktop Image, Control Operator PC



Hub

Information Relay



XIS System

Operator



XIS System

With Remote Workstation



Hub



A. Standard Remote Table

For Distances Up to 15 ft (4.5 m).*

Includes:

- Advanced Operator Control Panel (AOCP)
- Monitor(s)
- Table



B. KVM Remote Table

For Distances Up to 100 ft (30.5 m).*

Includes:

- 2 Extender Boxes
- AOCP
- Monitor(s)
- Table



C. PC Remote Table

For Distances Up to 200 ft (61 m).*

Includes:

- Additional Computer
- AOCP
- Ethernet Connection
- Monitor(s)
- Table

*Actual Cable length

D. For Distances Over 200 ft (61 m), Please Contact sales@astrophysicsinc.com



Stop

CONTACT US

Astrophysics HQ
21481 Ferrero Parkway
City of Industry, CA 91789 USA

www.astrophysicsinc.com
sales@astrophysicsinc.com | +1.909.598.5488

TOMORROW'S TECHNOLOGY FOR TODAY'S SECURITY™



ASTROPHYSICS™

TOMORROW'S TECHNOLOGY FOR TODAY'S SECURITY

ASTROPHYSICS MANAGEMENT SYSTEM (AMS)



ASTROPHYSICS
MANAGEMENT SYSTEM

What is the AMS?

The Astrophysics Management System (AMS) functions as a central hub for configuring and updating any connected Astrophysics systems on a local area network. It allows users to make changes to an entire network of units and workstations from a central location instead of needing to visit and update each machine individually.

Upon starting up an Astrophysics scanner or workstation, signals are immediately sent from those machines to the AMS requesting and retrieving recent system changes or data updates. This data can include added or deleted users, altered administrator settings, and software updates such as Threat Image Protection (TIP) library additions and TIP settings. The AMS sends data back to the machines or workstations and automatically updates their systems as necessary. The AMS can globally configure all connected Astrophysics systems on a network at once or configurations can be programmed on a machine-specific basis.

The AMS uses a rack-based system complete with a see-through server shield for simple status checks while maintaining proper and efficient security. The AMS comes standard with a redundant array of independent disks (RAID) system server, a built in keyboard and monitor, and a rack mounted uninterruptible power supply (UPS). If memory becomes an issue, the AMS server is completely expandable and additional servers can be added as needed.

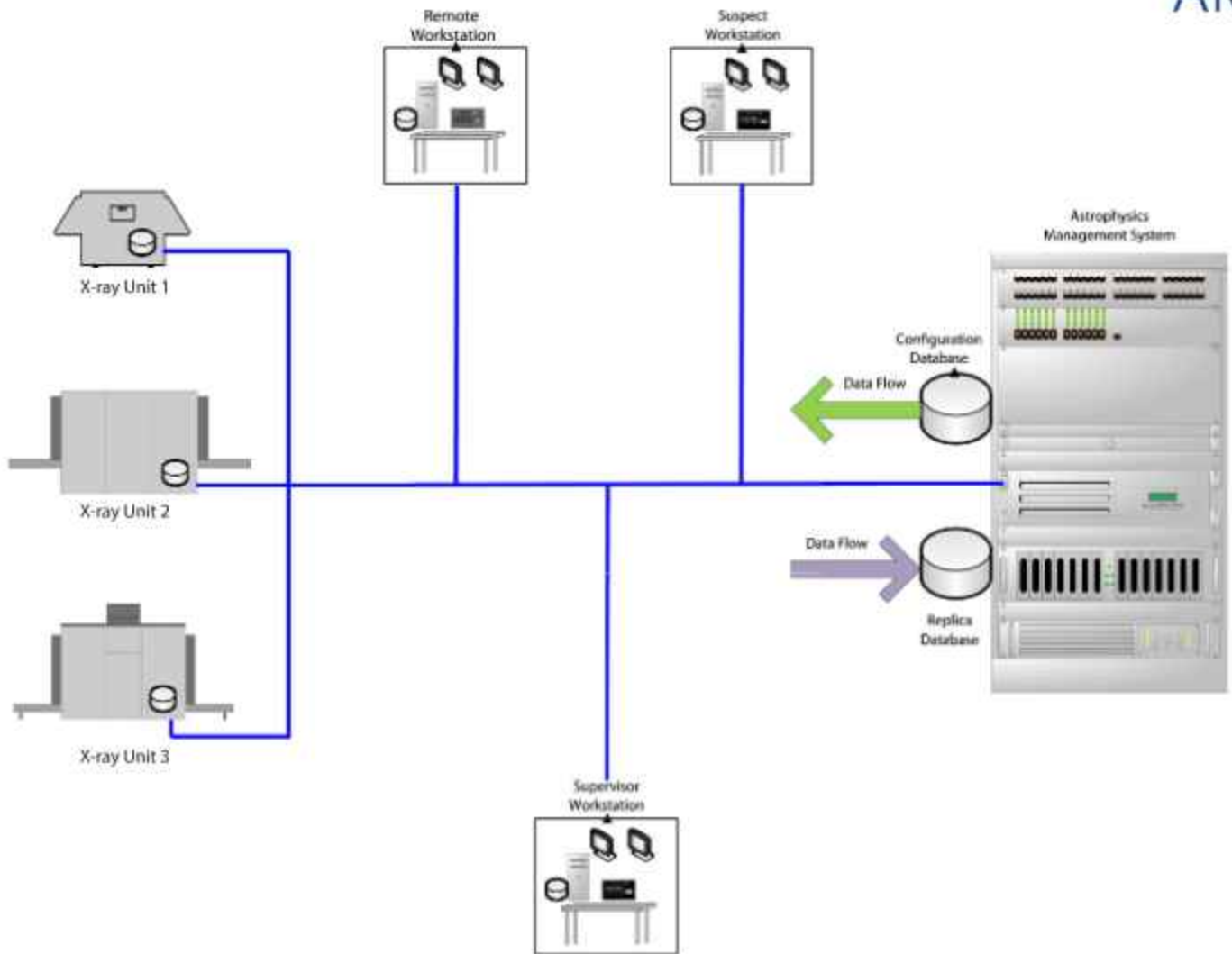


FIGURE 1: SAMPLE NETWORK

In the sample network shown above, three X-ray Inspection Systems (XIS) and three independent work stations link to a single AMS. The XIS scanners pictured above vary in size and capability; the top unit is the smallest and designed for checkpoint and small baggage scanning; the middle larger unit is a heavy duty high performance system for pallet and cargo inspection; and the third unit is a down shooter, equipped with dual-view technology for pallet and cargo inspection. All three units are connected to and download updates from a single AMS.

In addition, three completely separate and independent workstations (a remote work station, a suspect work station and a supervisor workstation) connect to the same AMS to retrieve and automatically update system configurations as needed. All six units can download the same updates. However, for configurations pertaining to only one specific unit, the AMS can be programmed to update that specific unit on an individual basis. For instance, the AMS can be programmed to update all units with new software and also update the Supervisor Workstation with a new supervisor user account.

Software

- Automatic TIP library updates
- TIP settings configurations across network
- Records TIP activity
- Configures Administrator settings across network
- Monitors network activity in real time

Specifications

- Dimensions: 109.2 x 60.0 x 199.4 cm
(L x W x H) 43.0" x 23.6" x 78.5"
- Weight: 130 kg (286 lb)

Hardware

- Secured tower case & rack with lockable door & server shield
- Server with RAID system (multiple hard drives), Xenon processor, 8GB RAM, Windows server OS, 1 TB HDD
- Expandable storage
- Built-in video, mouse and sliding keyboard assembly
- 1 Gbps network switch
- Rack-mounted UPS
- Built-in cooling ventilation

AMS000000-00 Rev. C

ZK-D2180S



- 18 Zonas de Detección
- 256 Niveles de Sensibilidad
- Pantalla LCD de 3.7"
- Contador de Alarmas y Personas
- Batería Opcional

Usos Recomendados



Centros de Detención



Prisiones



Centros de Rehabilitación



Entrada de Voltage	100 - 240V, 50-60Hz, <20W
Peso	70 Kg
Temperatura de Operación	-20°C hasta 45°C
Alarma	Pitido y LED
Zonas de Detección	18
Funciones Opcionales	Batería de respaldo
Dimensiones Internas	201 x 70 x 50 cm
Dimensiones Externas	220 x 80 x 58 cm

ZKTeco Latinoamérica

German Centre 3-2-02, Av. Santa Fe No. 170, Lomas de Santa Fe, Álvaro Obregón, 01210 México D.F. (52) 55 - 5292 8418
www.zktecolatinoamerica.com

Reservados todos los derechos. No se permite la explotación económica ni la transformación de esta obra. Queda permitida la impresión en su totalidad. ZKTeco y la marca son propiedad de ZKTeco Inc.



ZK-D2180S



- 18 Zonas de Detección
- 256 Niveles de Sensibilidad
- Pantalla LCD de 3.7"
- Contador de Alarmas y Personas
- Batería Opcional

Usos Recomendados



Centros de Detención



Prisiones



Centros de Rehabilitación



Entrada de Voltage	100 - 240V, 50-60Hz, <20W
Peso	70 Kg
Temperatura de Operación	-20°C hasta 45°C
Alarma	Pitido y LED
Zonas de Detección	18
Funciones Opcionales	Batería de respaldo
Dimensiones Internas	201 x 70 x 50 cm
Dimensiones Externas	220 x 80 x 58 cm

ZKTeco Latinoamérica

German Centre 3-2-02, Av. Santa Fe No. 170, Lomas de Santa Fe, Álvaro Obregón, 01210 México D.F. (52) 55 - 5292 8418
www.zktecolatinoamerica.com

Reservados todos los derechos. No se permite la explotación económica ni la transformación de esta obra. Queda permitida la impresión en su totalidad. ZKTeco puede, en cualquier momento y sin previo aviso, realizar cambios o mejoras en los productos y servicios o detener su producción o comercialización. El logo ZKTeco y la marca son propiedad de ZKTeco Inc.



Garrett Super Scanner® V

Hecho en EE. UU. 

Detector de metales manual

Máxima sensibilidad: Supera la norma NIJ 0602.02

- Detecta una pistola de tamaño mediano desde una distancia de 9 in;
- un cuchillo grande a 6 in de distancia;
- un cúter a una distancia de 5 in;
- una llave de esposas a una distancia de 4 in;
- hojas de afeitar a una distancia de 3 in;
- un cartucho de rifle largo del calibre 22 a 2 in de distancia;
- drogas envueltas en papel de aluminio y pequeñas joyas a 1 in de distancia


Gran superficie de escaneo de 8 in (20,3 cm) para un escaneo rápido y exhaustivo.

Una alarma sonora aguda y un LED rojo brillante indican la detección de metal.

Ajuste seguro de la sensibilidad interna

Mango de goma resistente a la intemperie

El pulsador momentáneo ayuda a eliminar temporalmente la detección de metales en el ambiente cercano, como ferralla y paredes metálicas.

Alarma vibratoria seleccionable 

Carcasa de ABS robusta y de alto impacto con compartimento de bobina reforzado. Supera los requisitos de la norma Mil-Std - 810G (prueba de caída), Método 516.6, procedimiento II.



Busque la marca de calidad Garrett

Reconocido en todo el mundo

El Garrett Super Scanner es el detector de metales manual más reconocido del mundo. Originalmente se diseñó para que se utilizara en los Juegos Olímpicos de 1984 y se ha actualizado de forma permanente para satisfacer las necesidades de detección de metales en constante evolución.

Detección de todo tipo de metales
Detecta armas de hierro, de metales no ferrosos y de acero inoxidable, objetos de contrabando y otros objetos metálicos.

Autocalibración

La tecnología del microprocesador digital elimina la necesidad de ajustes periódicos de sensibilidad.



Información regulatoria: Cumple las normas internacionales de seguridad para aeropuertos, prisiones y eventos especiales, así como otras normas adicionales, como la CEAC y la NIJ 0602.02. El Super Scanner® V cumple con los requisitos reglamentarios de seguridad electromagnética de EE. UU. e internacionales. No se ha encontrado en investigaciones exhaustivas ninguna información que indique que los productos de Garrett tengan efectos adversos en el embarazo, en los dispositivos médicos (como marcapasos) ni en los medios de grabación magnéticos. Sin embargo, deben seguirse las directivas de los médicos y los fabricantes de dispositivos médicos con respecto a los detectores de metales. 1555400 REV H, 09/2023 © 2023 Garrett Electronics, Inc., EC-10832

Vista superior



Vista lateral



Vista inferior



Super Scanner V

Detector de metales manual

PN: 1165190

No se necesitan herramientas para cambiar la batería estándar de 9V (incluida). Kit opcional de baterías recargables disponible.

Indicación LED de tres colores	LED verde = ENCENDIDO LED ámbar = BATERÍA BAJA LED rojo = ALARMA
Temperaturas de funcionamiento	-35° F (-37° C) to 158° F (70° C)
Humedad Hasta	el 95 % sin condensación
Frecuencia de audio	2 kHz Warble
Sintonización	automática
Ancho	3.25" (8.3 cm)
Espesor	1.625" (4.1 cm)
Longitud	16.5" (42 cm)
Peso total	17.6 oz (500 g)
Marcas de EE. UU.	1,754,933 and 3,236,345
Requisitos de batería	Una de 9V (incluida)
Garantía	limitada de 3 años en piezas y mano de obra
Información reglamentaria	<ul style="list-style-type: none"> • Cumple con las normas internacionales de seguridad para aeropuertos (incluidas la ECAC y STAC) y prisiones NIJ-0602.02. • Cumple con las normas RPB-SC-18 de Health Canada, los requisitos de seguridad y compatibilidad eléctrica, y supera el método 516.6, procedimiento II, de la norma MIL-STD-810G (prueba de caída). • Cumple con la norma de seguridad eléctrica EN 61010. • Supera el MTBF en más de 100 000 horas.



Accesorios del Super Scanner® (se venden por separado)



Kit de baterías recargables 110 -240V
n.º de pieza 1610200
Permite la recarga sin necesidad de retirar la batería. Incluye cargador y batería de Ni-MH sin cadmio respetuosos con el medio ambiente.



Auricular
N.º de pieza 1600100



Arnés de cuero con lazo para el cinturón
N.º de pieza 1600800



Soporte para el cinturón
N.º de pieza 1611600
Hecho de material con tejido balístico duradero. Se puede usar en un cinturón o se puede montar en un coche.

1.800.234.6151 (USA and Canada)
1.972.494.6151

1881 W. State Street
Garland, TX 75042

Email: security@garrett.com

GARRETT

Hecho en EE. UU.

GARRETT



BEST IN CLASS SECURITY

Enter *Paragon*. For security supervisors unwilling to compromise on security results, Garrett's *Paragon* walk-through metal detector is a game changer. Powerful performance meets new heights of flexibility and ease-of-use in a fresh, sophisticated package.



Designed to meet certification:



DHS
Safety Act
Certified



ECAC
(European
airports)



STAC
(French
airports)



Aena
(Spanish
airports)



CJAC
(Japanese
airports)

Department for
Transport

DfT
(U.K.
airports)



AMBISCAN™



IP65



66 ZONES



QUICK-Q⁺



ZERO TOUCH™

Paragon Advantage



Ambiscan™. *EXCLUSIVE*

Cut checkpoint footprint in half. Directional sensitivity reduces operator fatigue and allows different detection targets on egress versus ingress.



66 Zones. *EXCLUSIVE*

Granular awareness of alarm area top-to-bottom and left/middle/right is unmatched in the world of security metal detection.



Bilateral detection. *EXCLUSIVE*

Provides evenly distributed detection, simplifies multi-unit setup, and achieves superior target analysis to single-sided detection.



IP65.

Exacting construction provides protection from dust and moisture.



Cellphone discrimination.

Optional settings allow cell phones to be ignored while still catching mass casualty weapons.



Zero Touch™.

NFC card reader allows secure settings adjustment without mechanical insertion, meaning less wear and fewer card replacements.



Integrated UPS.

Includes internally-mounted 1 hour emergency power ensures sustained operation in the event of accidental AC disconnect or power outage.

Part No.
1630200
1169600
2238000
1630700
1169101
1171600
1171200

Paragon Accessories

Paragon Adhesive Floor Mount Kit
Paragon IR Remote Control
Quick-Swap Battery Pack 10Hr
Transportation Brace
Walkthrough Caster Set
IC Module, Wired/Wireless
I/O Relay Module

Standard Programs	Over 23 application programs included
Sensitivity	Up to 200 distinct sensitivity levels
Zone Indications	66 zones
Overhead Control Unit	All electronics—LED, alarm light, bar graph, control touch pads—integrated to eliminate exposed wires, tampering.
Tamper-Proof Settings	Three levels of access control
Self Diagnostic Program	Complete and automatic
Zone Sensitivity Boost	22 Independently adjustable boosts
Quick-Swap Battery Packs	1.8 amp-hour battery module provides typical 1 hour operating time. Optional 14 amp-hour battery module provides up to 10 hours operating time. Both batteries are integrated to eliminate exposed wires, tampering and are 'plug and play'.
Passageway Interior Size	Width 30" (0.76 m) ADA width 32.5" (0.83 m) Height 81.5" (2.07 m) Depth 23" (0.58 m)
Overall Exterior Size	Width 35" (0.90 m) Height 87" (2.21 m) Depth 23" (0.58 m)
Shipping Size	Width 36" (0.91 m) Height 89" (2.26 m) Depth 9" (2.2 m)
Shipping / Assembled	Weight 180 lbs. (81.64 kg) / 152 lbs. (68.95 kg)
Temperatures	Operating on AC: -4° F (-20° C) to +131° F (55° C) Battery operation: 14° F (-10° C) to +140° F (60° C) Humidity to 95% non-condensing Storage: -22° F (-30° C) to 176° F (80° C) Battery storage: -14° F (-10° C) to +176° F (80° C)
Power	Fully automatic. 100 to 240 VAC—± 10%, 50 or 60 Hertz, 60 watts; no rewiring, switching or adjustments needed.
Regulatory Information	Meets Electrical Safety and Compatibility Requirements for CE, FCC, CSA, IEC, ICNIRP, IEEE. Design to meet international airport standards such as STAC, AENA, CIAC, DFT. ECAC certifications pending.
Weatherproofing	Meets IP 65, IEC 529 Standard for moisture, foreign matter protection
Construction	Attractive scratch and mar-resistant laminate. Detection Head and Support: heavy duty aluminum.
Random Alarm Feature	Adjustable from 0 to 100 percent.

Part No.
1172001
1172002
1172003
1172004

Model/Clearance

U.S. Standard 30"
International Standard 30"
U.S. ADA-compliant 32.5"
International ADA-compliant 32.5"

Paragon Walk-Through Metal Detector

garrett.com



For more information



Email: security@garrett.com
Tel: 1.972.494.6151
Toll Free (U.S. and Canada): 1.800.234.6151

1557800 REV A.1, EC-11029 Feb. 2024 © Garrett Electronics, Inc.

GARRETT



MÁXIMA SEGURIDAD, MAYOR VERSATILIDAD.

Para entornos que exigen máxima seguridad. El nuevo arco detector de metales, PARAGON de GARRETT, llega para cambiar las reglas, gracias a su potente rendimiento, que alcanza nuevos niveles de versatilidad y facilidad de uso, con un diseño renovado y sofisticado.

Diseñado para cumplir con la certificación:



AMBISCAN™



IP65



66 ZONAS



QUICK-Q®



ZERO TOUCH™



VENTAJAS



Ambiscan™. **EXCLUSIVO**

Permite configurar dos sensibilidades simultáneas basada en la dirección del tráfico. Un solo equipo hace el trabajo de dos.



66 Zonas de Detección. **EXCLUSIVO**

Identificación de objetivos izquierda/centro/derecha en 22 bandas horizontales, ajustables de forma independiente, de manera rápida y eficaz.



Detección Bilateral. **EXCLUSIVO**

Capacidad dual de transmisión y recepción en ambos paneles que proporciona una detección uniforme, obteniendo una detectabilidad superior a mayor velocidad.



IP65.

Su construcción robusta garantiza su rendimiento en todo tipo de clima, con resistencia al polvo y agua.



Discriminación de teléfonos móviles

Las configuraciones opcionales permiten ignorar los teléfonos móviles y al mismo tiempo detectar armas letales.



Zero Touch™.

El lector de tarjetas NFC permite una configuración segura, sin inserción mecánica, lo que significa menos desgaste y menos reemplazos de tarjetas.



SAI Integrado.

Incluye un sistema de alimentación ininterrumpida de emergencia interno de una hora, que garantiza un funcionamiento sostenido en caso de desconexión accidental de CA o corte de energía.

Programas estándar
Sensibilidad
Indicación de Zonas
Unidad Control Superior

Configuración a prueba de Manipulaciones
Programa Auto-diagnóstico
Aumento de Sensibilidad de Zonas
Paquete de Baterías Quick-Swap

Tamaño paso interior

Tamaño total exterior

Tamaño con embalaje

Peso / con embalaje

Temperaturas

Alimentación

Información Legal

Impermeabilización

Construcción

Más de 23 programas de aplicación incluidas.

Más de 200 niveles de sensibilidad.

66 zonas.

Toda la electrónica, LED, luz de alarma, gráfico de barras, control de paneles tácticos, están integrados para eliminar cables expuestos y manipulación.

Tres niveles de control de acceso.

Completo y automático.

22 aumentos ajustables e independientes.

El módulo de batería de 1,8 AMP/hora proporciona un tiempo de funcionamiento típico de 1 hora de funcionamiento. El módulo de batería opcional de 14 AMP/hora proporciona hasta 10 horas de funcionamiento. Ambas baterías están integradas para eliminar cables expuestos y manipulación y son "plug and play".

Ancho 30" (0,76 m) ADA 32.5" (0,83 m)

Altura 81.5" (2,07 m)

Profundidad 23" (0,58 m)

Ancho 35" (0,90 m)

Altura 87" (2,21 m)

Profundidad 1,58m

Ancho 36" (0,91 m)

Altura 89" (2,26 m)

Profundidad 9" (.22 m)

~180 lbs. (82 kg) / 152 lbs. (69 kg)

Funcionamiento CA: -4º F (-20º C) a +140º F (60º C)

Operación batería: 14º F (-10º C) a +140º F (60º C)

Humedad al 95% sin condensación.

Almacenamiento: -22º F (-30º C) a 176º F (80º C)

Almacenamiento de Batería: -14º F (-10º C) a +176º F (80º C)

Totalmente automática 100 a 240 VCA,

50 o 60 Hertz, 40 watts; no es necesario

volver a cablear, cambiar ni ajustar.

Cumple con la seguridad y compatibilidad eléctrica.

Requisitos para CE, FCC, CSA, IEC, ICNIRP,

IEEE. Diseñado para cumplir con los estándares de

aeropuertos internacionales como STAC, AENA,

CIIAC, DFT. (ECAC certificación pendiente).

Cumple con IP 65, estándar IEC 529 protección

contra humedad y materias extrañas.

Laminado atractivo resistente a arañazos.

Cabezal de detección y soporte: Aluminio de alta resistencia.

Función de Alarma Aleatoria Ajustable de 0 al 100 %

Part No.

1630200

169800

2238000

1630700

1169101

1171800

1171200

Accesorios Paragon

Kit Adhesivo de montaje en suelo

Control Remoto por Infrarrojo.

Módulo de baterías de intercambio rápido de 10H

Abrazadera para transporte

Set de ruedas de paso

Módulo IC, Cableado / Inalámbrico

Módulo de relé I/O

Part No.

1172001

1172002

1172003

1172004

Modelo /Certificación

Estándar USA 30"

Estándar Internacional 30"

Cumple con la Ada USA 32.5"

Cumple con ADA internacional 32.5"



ORCROM
S E G U R I D A D

Ronda Europa 74, Nave 5,
08800 Vilanova i la Geltrú (Barcelona)
Tel: +34 935 756 244
E-mail: info@orcromseguridad.com
www.orcromseguridad.com

GARRETT

Super Scanner V®

PN1165190



The most recognized hand-held metal detector in the world,

The Garrett Super Scanner V stands out for its efficiency and reliability in the field of metal detecting and is widely acknowledged as the most famous/leading hand-held metal detector in the world. This detector identifies ferrous, non-ferrous, and stainless steel weapons, contraband, and other metallic objects with ultimate sensitivity. Its straightforward one-switch operation and multiple alarm modes ensure a user-friendly experience while maintaining the highest standards of detection accuracy.

Certified for:



Look for the mark of Garrett quality



Ultimate sensitivity: Exceeds NIJ 0602.02 Standard

- Detects medium sized pistol from 9' distance;
- large knife from 6' distance;
- box cutters from 5' distance;
- handcuff key from 4' distance;
- razor blades from 3' distance;
- a 22-caliber long rifle cartridge from 2' distance;
- foil-wrapped drugs and tiny jewelry from 1' distance

World Renowned

The Garrett Super Scanner is the most recognized hand-held metal detector in the world. Originally designed for use at the 1984 Olympic Games, and continually updated to meet evolving metal detection needs.

Large 8" (20.3 cm) scan surface
for quick, thorough scanning.

Sharp audible alarm and bright red LED
indicates the detection of metal.

Secure Internal Sensitivity Adjustment

Weatherproof rubber handle

GARRETT

All Metal Detection

Detects ferrous, non-ferrous and stainless steel weapons, contraband, and other metallic objects.

Self-calibrating

Digital microprocessor technology eliminates the need for periodic sensitivity adjustments.

Momentary push button

helps temporarily eliminate detection of nearby ambient metal such as rebar, metal walls.

Selectable Vibrating alarm 

Rugged, high-impact ABS case

with reinforced coil compartment. Exceeds Mil-Std-810G (drop test) Method 516.6, procedure II.

Three-color LED indication	Green LED = ON Amber LED = LOW BATTERY Red LED = ALARM
Operating Temperatures	-35° F (-37° C) to 158° F (70° C)
Humidity	To 95% noncondensing
Audio Frequency	2 kHz Warble
Tuning	Automatic
Width	3.25" (8.3 cm)
Thickness	1.625" (4.1 cm)
Length	16.5" (42 cm)
Total Weight	17.6 oz (500 g)
U.S. Trademarks	1,754,933 and 3,236,345
Battery Requirements	one 9V (included)
Warranty	3 Year, Limited Parts/Labor

Part No:	Super Scanner V Accessories
1610200	Rechargeable Battery Kit
1600100	Earphone
1600800	Leather Belt Loop Harness
1611600	Belt Holder

SUPER SCANNER V Accessories (sold separately)

Regulatory Information: Meets international security standards for airports, prisons, and special events and additional standards including ECAC and NIJ 0602.02. The Super Scanner® V meets U.S. and international regulatory requirements for electromagnetic safety. Extensive research has found no information that would indicate Garrett products have adverse effects on pregnancy, medical devices (such as pacemakers) or magnetic recording media. However, directives by physicians and medical device manufacturers regarding metal detectors should be followed.

Super Scanner® V hand-held metal detector

garrett.com



For more information



Email: security@garrett.com

Tel: 1.972.494.6151

Toll Free (U.S. and Canada): 1.800.234.6151

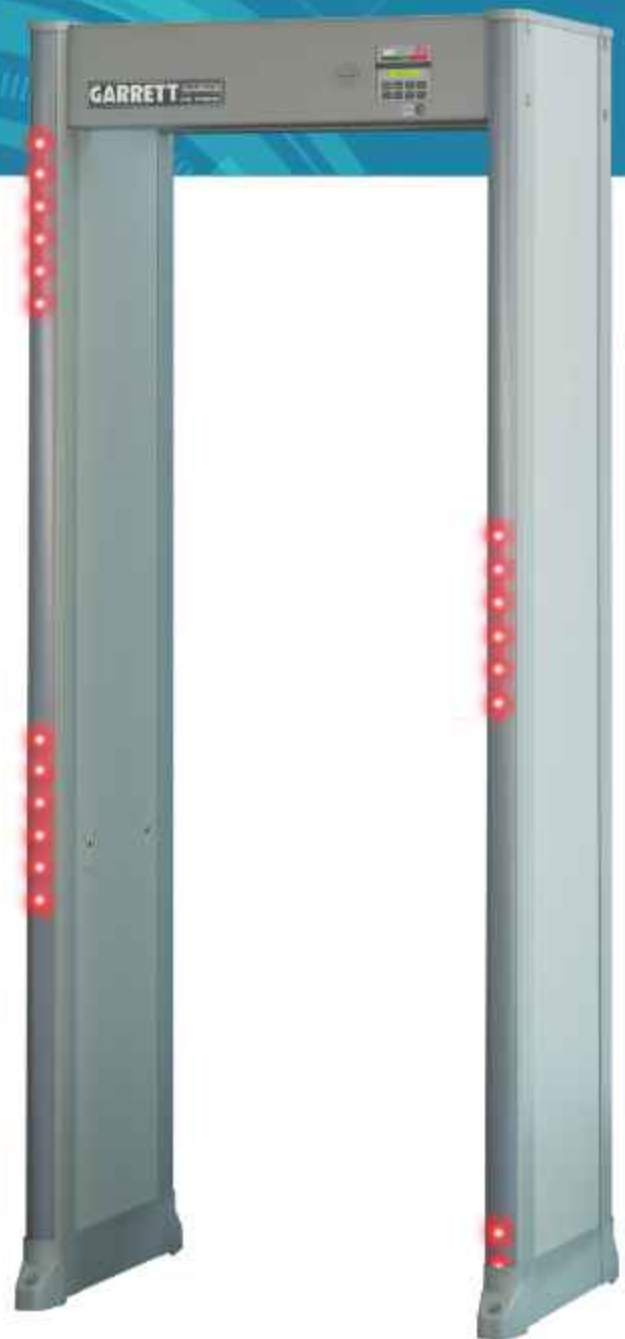
1555400 REV H1, EC-11052 March 2024 © Garrett Electronics, Inc.

GARRETT™



Meets the world's highest test certifications

Garrett's PD 6500i is an industry leader with superior pinpoint technology and unmatched discrimination features. This detector has proven its effectiveness at moving high volumes of patrons through such events such as the Olympic Games, World Cup 2010 South Africa, and the Pan-American Games in Mexico. The PD 6500i has also been trusted to safeguard international airports, hotels, government buildings, and correctional facilities. With its advanced networking and ability to pinpoint targets in 33 detection zones, the PD 6500i is the walk-through of choice for security professionals worldwide.



Meets certifications:



Tamper-proof

All settings are secured with a key lock and two levels of access codes. Further security is accomplished with a cabinet lock that prevents unauthorized access to physical cables, connectors and electronics.

Easy assembly

The PD 6500i's modular design allows for a quick and simple assembly of its four (4) sub assemblies using only eight (8) screws and three (3) internal cable connections.

Digital Signal Processor (DSP) based technology

DSP provides greater sensitivity, noise immunity, discrimination, detection uniformity, and overall product reliability.

PD 6500i Advantage

Bilateral detection

This unique bilateral technology has transmitters and receivers in each side panel to allow scanning from both sides, resulting in uniform detection throughout the archway. It also provides superior noise cancellation resulting in easier setup (i.e. no need to rotate the unit to avoid interference from nearby equipment such as other metal detectors or x-ray machines).

Advanced broadband technology

Analyzes targets across a broad range of frequencies for greater accuracy. Provides superior ferrous and non-ferrous detection. Improved discrimination means fewer false alarms and higher throughput.

More accurate pinpointing

With more than four times the detection coils of competitive models, the PD 6500i provides uniform detection and precise pinpointing. Independent zone indicator lights on both side panels identify not only height but also left, center and right locations for one or more objects passing through the archway.

Optimum Performance

More than 20 standard program settings scientifically engineered to address the needs of airports, courthouses, prisons, schools, facilities, special events, mass transit, loss prevention, and other applications.

Superior versatility

Menu based settings for feature selection such as alarm indication, count method, and language without the use of a computer. Field programmable to allow system upgrades. Multiple units can be installed as close as 2 inches.

Directional counter

Four settings for counting patrons: forward only, reverse only, subtract in reverse, and bidirectional.

Pacing lights

Universal "wait" and "proceed" symbols at the detector entrance for traffic controls.

Part No.	PD 6500i Accessories
2225420	Lithium battery module, 14Ahr
1171200	I/O Relay Module
1171600	iC Module (Wireless & Wired)
1169500	IR remote control
1171100	Desktop Remote Control
1169101	Caster system
1604101	Adhesive floor mount kit
1169800	Wireless Sync SM100

Standard Programs	Over 20 application programs included
Sensitivity	Up to 200 distinct sensitivity levels
Optics	3 Infrared
Zone Indications	33 independent zones
Overhead Control Unit	All electronics—LCD, alarm light, LED bar graph, control touch pads—integrated to eliminate wire exposure.
Tamper-Proof Settings	Three access levels of security clearance
Self Diagnostic Program	Complete and automatic
Calibration	Automatic and manual calibration
Initialization Time	1 second
Zone Sensitivity Boost	Adjustable in six areas
Maximum Pass-Through Speed	15m/sec.
Battery Pack (optional)	10-hour (additional backup available upon request)
Warranty	36 months, Limited Parts/Labor
Passageway Interior Size	Width 30" (0.76 m) Height 80" (2.03 m) Depth 23" (0.58 m)
Overall Exterior Size	Width 35" (0.90 m) Height 87" (2.21 m) Depth 23" (0.58 m)
Shipping Size	Width 35.5" (0.90 m) Height 91.5" (2.32 m) Depth 6.25" (1.6 m)
Shipping Weight	165 lbs. (74 kg)
Temperatures	Operating: -4°F (-20°C) to +149°F (65°C) Humidity to 95% non-condensing Storage: -22°F (-30°C) to 176°F (80°C)
Power	Fully automatic: 100 to 240 VAC, 50 or 60 Hertz, 45 watts; no rewiring, switching or adjustments needed.
Regulatory Information	Meets international airport standards such as TSA, ECAC, STAC, AENA, CJIAC, DFT. Meets additional standards and requirements such as USMS, NJ-0601.02, NILECJ. Meets Electrical Safety and Compatibility Requirements for CE, FCC, CSA, IEC, KNIRP, IEEE.
Weatherproofing	Meets IP 55, IP 65, IEC 529 Standard for moisture, foreign matter protection
Construction	Attractive scratch and mar-resistant laminate. Detection Heads and Support: heavy duty aluminum. Immunity to electrical interference, ambient noise and mechanical vibrations.
Control Outputs	Solid state switches (low voltage AC or DC) for operating external alarms and control devices.
Remote Control (optional)	Desktop Remote Control with Zone Indication and/or via network with iC Module.
Networking (optional)	Manage individual or groups of walkthroughs and perform statistical analysis of throughput with iC Module.

Part No.	Model/Clearance
USA/International	
1168414/1168424*	Standard 30" IP55
1168418/1168425*	Standard 30" IP65
1168416/1168426*	EZL ¹ IP55
1168432/1168427*	32.5"*** IP55

Other options available.

* Supplied with Euro plug.

¹ EZL—Standard 30" clearance with zone lights on both the entry and exit sides, allowing the operator to view the alarmed object from any position.

*** 32" ADA-compliant passageway

PD 6500i Walk-Through Metal Detector

garrett.com



For more information



Email: security@garrett.com
Tel: 1.972.494.6151
Toll Free (U.S. and Canada): 1.800.234.6151

1554400 REV P, EC-11092 May 2024 © Garrett Electronics, Inc.



GARRETT™



Safety and performance at an affordable price

Garrett's *Multi Zone* walkthrough metal detector provides enhanced performance and special program selections engineered to meet the varying security requirements of schools, special events, government buildings, mass transit, entertainment venues, loss prevention, zoos, and more.

This budget-friendly detector includes a bright LED display and a zone light array on each side that is visible in the brightest sunlight. The *Multi Zone's* industry leading performance is enhanced by an Auto Setup function, 20 zones, and tamper proof circuitry. Operator adjustments are simple, thanks to the unit's intuitive menu design and slider bar feature. A 1.5 amp-hour battery is included to act as a backup unit during power loss or accidental AC disconnection.



Tamper-proof

Circuitry and cabling are secured behind a lockable panel. All settings are secured with two levels of access codes and a keypad restrict switch.

Easy assembly

The *Multi Zone's* modular design allows quick and simple assembly of its four (4) sub assemblies using only eight (8) screws and three (3) internal cable connections.

Digital Signal Processor (DSP) based technology

DSP provides greater sensitivity, noise immunity, discrimination, detection uniformity, and overall product reliability.

Multi Zone Advantage

Intuitive Menu Design

32-character menu prompts are easy to understand (i.e. no confusing codes or acronyms to memorize).

Auto-Scan Function

The Multi Zone scans electromagnetic environment and selects optimal frequency for noise cancellation.

Unique Slider Bar

Use to quickly adjust the value of a setting.

Battery Backup Included

Internal 1.5 amp-hour lithium battery provides approximately 1 hour of emergency power, and the optional 14 amp-hour lithium battery provides approximately 10 hours of operation.

Optimum Performance

More than 15 application programs engineered to address the needs of schools, special events, courthouses, facilities, mass transit, zoos, loss prevention, and many other applications.

Advanced Synchronization

Advanced circuitry allows multiple detectors to be installed as close as 2 inches from each other.

Superior Versatility

Field programmable to allow system upgrades. Environmentally protected against wind, rain and dust. Full array of accessory items such as IR remote control (for easy adjustments) and caster sets (to make unit fully portable).

20-Zone Precision

The Multi Zone's twenty zones provide precise location of one or more objects simultaneously.

Directional Counter

Four settings for counting patrons: forward only, reverse only, subtract in reverse, and bidirectional.

Part No.	Multi Zone Accessories
1171400	Lithium battery module, 14Ah
1171200	I/O Relay Module
1171600	iC Module (Wireless & Wired)
1169500	IR remote control
1171100	Desktop Remote Control
1169101	Caster system
1604101	Adhesive floor mount kit

Standard Programs	Over 15 application programs included
Sensitivity	Up to 200 distinct sensitivity levels
Zone Indications	20 zones
Overhead Control Unit	All electronics—LED, alarm light, bar graph, control touch pads—integrated to eliminate exposed wires, tampering.
Tamper-Proof Settings	Three levels of access control
Self Diagnostic Program	Complete and automatic
Zone Sensitivity Boost	20 Independently adjustable boosts
Battery Packs	1.5 amp-hour battery module provides typical 1 hour operating time. Optional 14 amp-hour battery module provides up to 10 hours operating time. Both batteries are integrated to eliminate exposed wires, tampering.
Warranty	36 months, Limited Parts/Labor
Passageway Interior Size	Width 30" (0.76 m) Height 80" (2.03 m) Depth 23" (0.58 m)
Overall Exterior Size	Width 35" (0.90 m) Height 87" (2.21 m) Depth 23" (0.58 m)
Shipping Size	Width 35.5" (0.90 m) Height 91.5" (2.32 m) Depth 6.25" (1.6 m)
Shipping Weight	151 lbs. (68.5 kg)
Temperatures	Operating on AC: -4°F (-20°C) to +140°F (60°C) Battery operation: 14°F (-10°C) to +140°F (60°C) Humidity to 95% non-condensing Storage: -22°F (-30°C) to 176°F (80°C) Battery storage: -14°F (-10°C) to +176°F (80°C)
Power	Fully automatic 100 to 240 VAC, 50 or 60 Hertz, 40 watts; no rewiring, switching or adjustments needed.
Regulatory Information	Meets Electrical Safety and Compatibility Requirements for CE, FCC, CSA, IEC, ICNIRP, IEEE. Additional certifications pending.
Weatherproofing	Meets IP 55, IEC 529 Standard for moisture, foreign matter protection
Construction	Attractive scratch and mar-resistant laminate. Detection Head and Support: heavy duty aluminum.
Access Control (optional)	I/O Relay Module provides relay contact via RS 485 cable
Remote Control (optional)	Desktop Remote Control with Zone Indication and/or via network with IoT Control Module (iC Module).
Networking (optional)	Manage individual or groups of walkthroughs and perform statistical analysis of throughput using iC Module.
Random Alarm Feature	Adjustable from 0 to 100 percent.

Part No.	Model/Clearance
USA/International	
1171000/1171010*	Standard 30" IP55
1171001/1171011*	Standard 30" IP65
1171005/1171015*	EZL [†] IP55
1171006/1171016*	32.5"*** IP55

Other options available.

* Supplied with Euro plug.

[†] EZL—Standard 30" clearance with zone lights on both the entry and exit sides, allowing the operator to view the alarmed object from any position.

^{**} 32" ADA-compliant passageway



Multi Zone Walk-Through Metal Detector

garrett.com



For more information



Email: security@garrett.com
Tel: 1.972.494.6151
Toll Free (U.S. and Canada): 1.800.234.6151

1555900 REV E, EC-11092 May 2024 © Garrett Electronics, Inc.