

Streamax

Video Telematics Solutions



For Trucking Industry



Streamax Technology Co.,Ltd.

Address: Floor 21-23, Building B1, No.1001 Xueyuan Road, Xili, Nanshan District, Shenzhen, Guangdong, China.

Tel: +86 755 3360 1988 Email: info@streamax.com
Fax: +86 755 3360 5005 Website: en.streamax.com

Company Overview



2000+
Employees



700+
R&D Staff Members



350+M
Installations



10%+
R&D Investment/Revenue Ratio

Building a Brighter Future of Transportation with Technology



Provide specialized solutions to all commercial vehicle verticals by empowering local partners around the world

Global Presence



Development Path



Driving Accident Threat

Number of Accidents



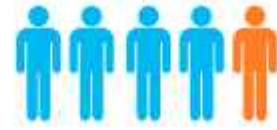
130,000

People suffer from injuries in truck accidents



500,000

Truck Related Crashes



4,102

Deaths in Truck Accidents

Cause of Accidents



of fatal crashes are caused by driver error



of all driver-related crashes are due to driver inattention



of non-performance driver-related crashes are due to falling asleep while driving

Accident Cost



\$ 24k

Average Cost of Property Damage



\$ 150K

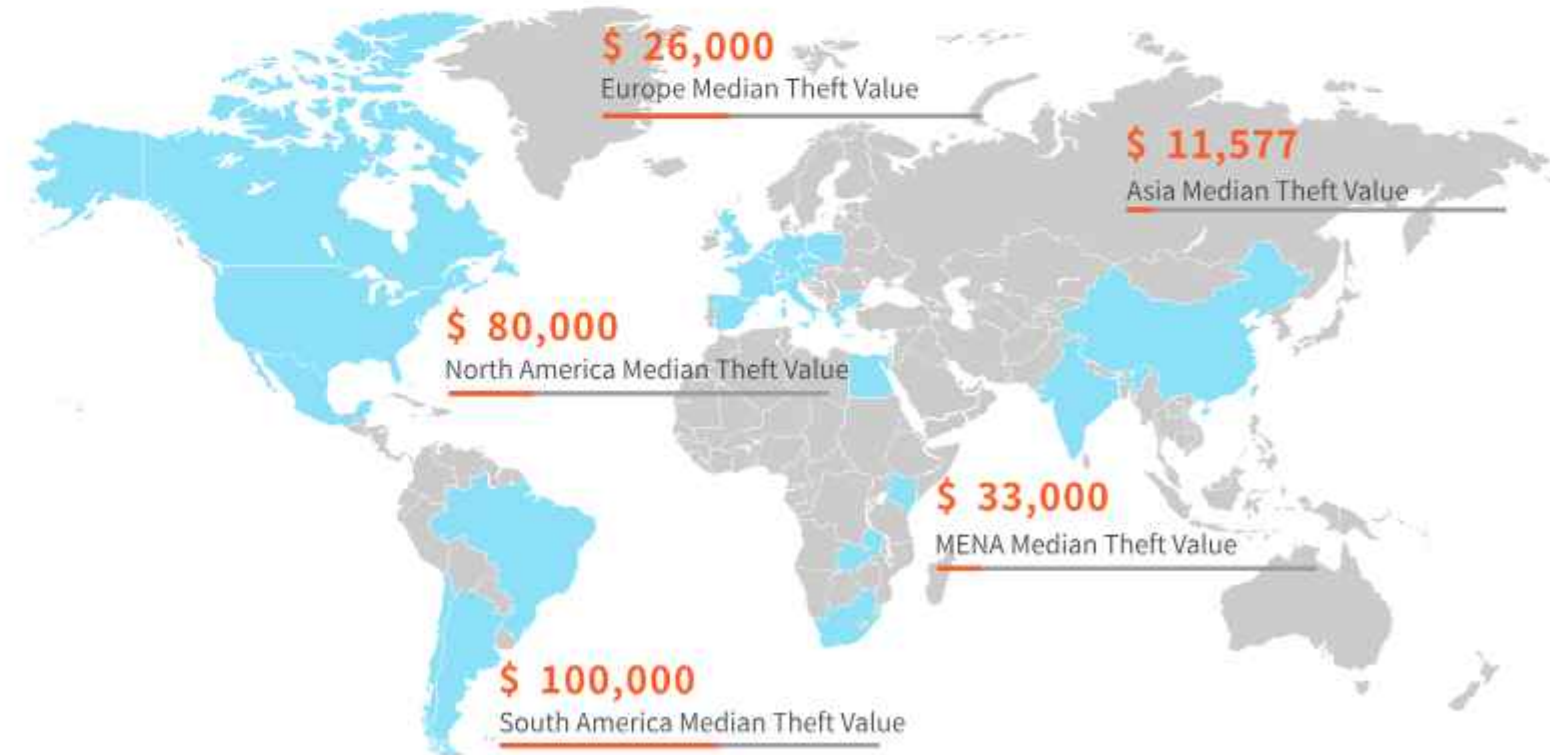
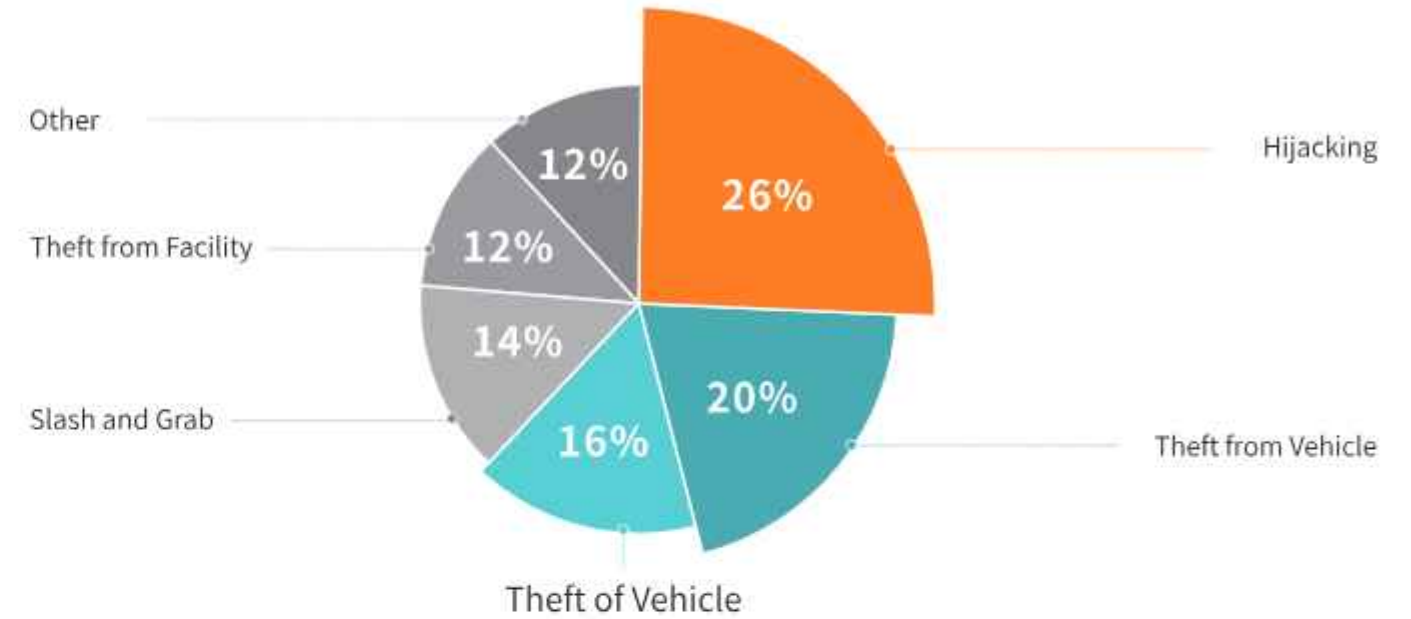
Average Cost of Injury



\$ 3.8M

Average Cost of Fatality

Cargo Security Threat



Streamax Video Telematics Solution



Hardware. Platform. API integrations. Streamax solution helps fleet improve safety, increase visibility and deliver the very best for their customers

Solution Benefits



Operation Visibility
Get real-time access to fleet status with live stream



Driving Assistance
Help reduce accidents caused by lacking operation experience of large vehicles



Driver Exoneration
Access to the video of accident instantly with cloud-connected platform



Driver Coach
Make driver coach easier than ever with intelligent harsh event capture



Cargo Surveillance
Eliminate potential security threat



Meet Compliance Requirement
keep fleet compliant with local regulation

Application Scenarios

Scenario 3 - Stop and Rest

Prevention of theft



Scenario 4 - Accidents

Instant retrieval of video evidence for responsibility distinction



Scenario 1 - Driving

Real-time driver alert when risk is detected by AI



Scenario 2 - Turning

Prevention of blind spot-related accidents

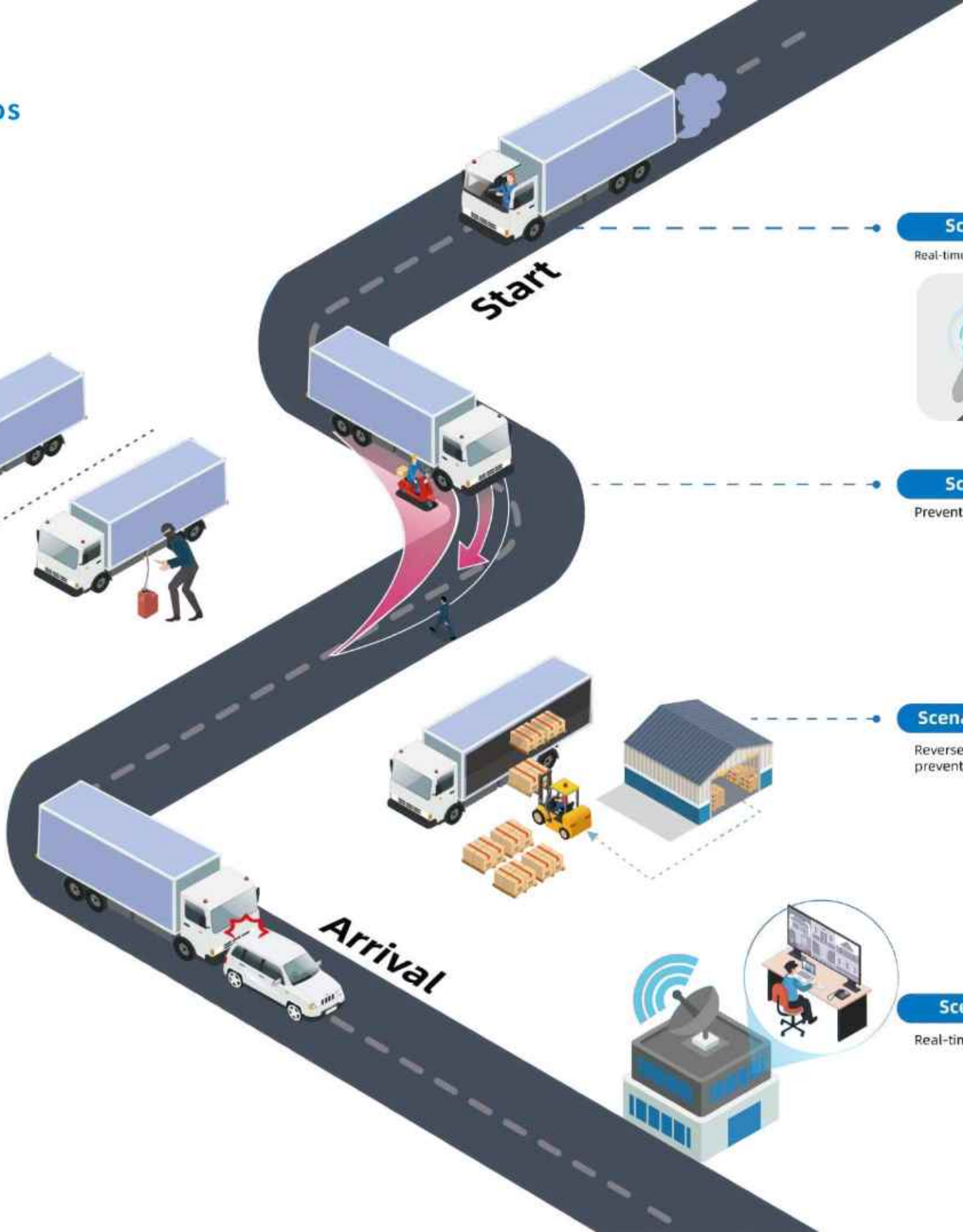
Scenario 5 - Loading and Unloading

Reverse Surveillance + 360° Surround View System to prevent accidents during loading and unloading

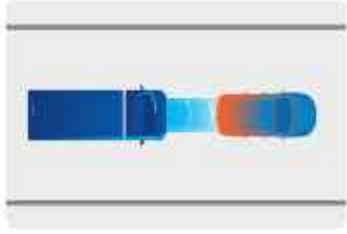


Scenario 6 - Remote Monitoring

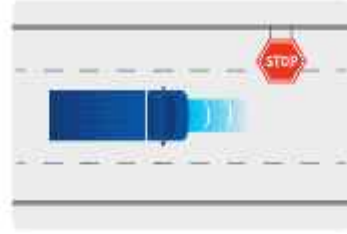
Real-time monitoring from managing personnel



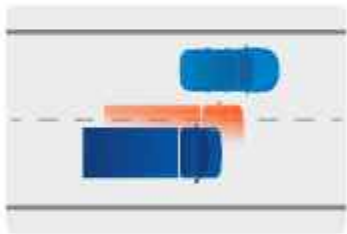
Advanced Driver Assistance System(ADAS)



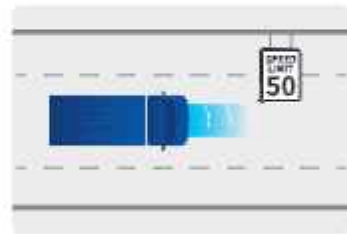
Forward Collision Warning(FCW)



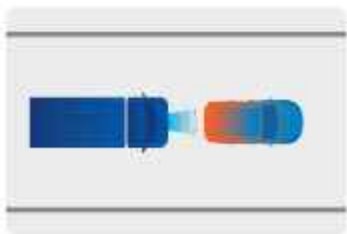
Stop sign recognition



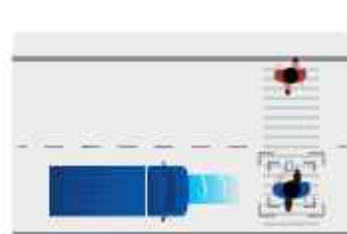
Lane Departure Warning (LDW)



Speed limit plate recognition



Headway Monitoring Warning(HMW)



Pedestrian warning

Driver Monitoring System(DMS)



Phone Call



Seat Belt



Fatigue



Smoking



Distraction



Verification

Blind Spot Detection (BSD)



Two sets of BSD solutions

Solution 1

BSIS+MOIS :
Eliminate lateral and anterior blindness

MOIS:
be sure to remind the driver to pay attention to pedestrians and cyclists in the 0.8-3.7 meter blind spot in front of the vehicle (vehicle speed 0-10km/h).

BSIS:
be sure to remind the driver to pay attention to pedestrians and cyclists in the blind area 7 meters in front of the vehicle's co-pilot side and 30 meters behind.

Solution 2

AI-AVM Panoramic Assistance System:
Focus on:
Visual obstacle avoidance and pedestrian risk warning for narrow road condition soft box trucks

Trailer Management

Wireless Camera-CA42 Kit: Wireless Camera materials

- 1080P@30FPS AHD Video Transmission
- 300 Meters Transmission Range
- 160ms Low Transmission Latency
- Auto Frequency Adjustment
- AI, blind spot detection
- Support for automatic pairing

Exterior and Interior 360° Visibility

Expandable coverage for monitoring and driver assistance

- 1 Right Side Camera: Vehicle side monitoring
- 2 Rearview Camera: Vehicle rear monitoring
- 3 Left Side Camera: Vehicle side monitoring
- 4 Cargo Camera: Cargo monitoring
- 5 Roof Camera: Roof monitoring
- 6 DMS Camera: Fatigue driving state detection
- 7 ADAS Camera: Road monitoring and collision prevention
- 8 Cabin Camera: Cabin monitoring

Platform for Fleet

AI TELEMATICS PLATFORM



REAL-Time GPS



Live View



Video Playback



Safety Reports



Web



APP



Platform for Local Service Provider



MANAGEMENT CENTER

Efficiently manage client accounts and all things set up for fleet



MAINTENANCE TOOL

Maximize uptime and minimize maintenance costs



Integration Tool for Developer

Integration API

Get up to speed on Streamax's open API, and use the tools and documentation you need to build powerful solutions.



Third Party Program



Streamax API



MDVR/Dash camera

Success Cases

1,200,000+
Installations

Trucking Solutions Worldwide

250,000+
Installations

AI-powered Solutions



FedEx Ground



Operation Visibility

- 22,000 Deployment
- Dashcam self-installed by FedEx
- Remote video retrieval at any time
- Harsh events captured by G-sensor
- Video based safety KPI implementation

Coca Cola

Driver Assistance

- Blind Spot Detection
- Driver Monitoring System
- Realtime In-cabin feedback
- 200+ hours continuous recording
- Reverse video assistance
- Single sign-on with Geotab
- 95% AI Accuracy
- Avg. 55.7% risky behavior reduction



Hardware Products

AI-Dashcam



5 Mega Pixel Road Facing Camera |
 2 Mega Pixel Cabin Facing Camera |
 15min Installation |
 Auto AI Calibration

A grid of 18 icons representing various safety and monitoring features. The first row includes: Fatigue, Phone Call, Smoking, Distraction, Face Recognition, Seat Belt, FCW, LDW, and HMW. The second row includes: Harsh Acceleration, Harsh Braking, Sharp Turn, PCW, Stop Sign, Speed Sign, BSD, Cargo Theft, and Reversing Assist.

• Features without the * sign are available when DMS/ADAS cameras are purchased.
 • Stop sign and speed sign recognition may not be available in your country, please contact Streamax account manager for more details.
 • For safety features regarding side/cargo/pedestrian, additional Streamax AI devices are required.

Specs	AD Plus 2.0
Video/Audio recording	4-channel video (default: 2 channels; extended: 2 channels) + 1-channel audio
Focal Length	ADAS: 2.8 mm HFOV: 123°; VFOV: 65° Cabin Cam: 2.2mm HFOV: 151°; VFOV: 84° DFOV: 170°
Accelerometer	Six-axle Sensor
Storage	2 * Micro SD cards, with the maximum capacity of a single card up to 256 GB
External Port	1*RS232,4*sensor input,1*USB
Network	WiFi, 3G, 4G
Power Supply	Support OBD port and loose wire
Dimension(L*W*H)	113.0 mm × 67.8 mm × 88.2 mm (excluding bracket)

AI-MDVR

The AI-MDVR hardware grid includes: DMS Camera* (Driver Monitoring System), In-Cab LCD (Real-time view), ADAS Camera (Road monitoring and collision prevention), Roof Camera (Roof monitoring), BSIS (Blind Spot Information System), a series of units (X1N, M1N, X3N, X3N PRO), MOIS (Moving Off Information System), Cabin Camera (Cabin monitoring), R-Watch (Audio and visual alert), B3 Notifier (Pedestrian risk notification), and Rearview Camera (Vehicle Rear Monitoring).

A grid of 18 icons representing various safety and monitoring features, identical to the AI-Dashcam section. The first row includes: Fatigue, Phone Call, Smoking, Distraction, Face Recognition, Seat Belt, FCW, LDW, and HMW. The second row includes: Harsh Acceleration, Harsh Braking, Sharp Turn, PCW, HMW, BSD, Cargo Theft, and Reversing Assist.

• Features without the * sign are available when DMS/ADAS cameras are purchased.
 • Stop sign and speed sign recognition may not be available in your country, please contact Streamax account manager for more details.
 • For safety features regarding side/cargo/pedestrian, additional Streamax AI devices are required.

Specs	M1N	X1N	X3N	X3N PRO
Video Input	4 channels AHD+1 channel IPC	4 channels AHD+1 channel IPC	4 channels AHD+4 channels IPC	4-channel AHD + 4-channel IPC
AI Capabilities	2*channels	2*channels	2*channels	8* channels
Resolution	1080P	1080P	1080P	1080P
Storage	2*256GB SD Cards	1*1TB HDD or 1*2TB SSD	1*256G SD Card and 1*2TB HDD	1*256 GB SD +1 × 3.5" SATA HDD + 1 × M.2 SSD
Accelerometer	Six-Axis	Six-Axis	Six-Axis	Six-Axis
External Port	8*I/O, 2*sensor out, 2*RS 232, 1*RS 485	8*I/O, 2*sensor out, 1*RS 232, 1*RS 485	8*I/O, 2*sensor out, 2*RS 232, 2*RS 485	8*I/O,2*sensor out,1 × USB2.0 + 1 × USB2.0 (Type A), 2 × RS232 + 2 × RS485
Network	4G,WIFI,Bluetooth	4G,WIFI,Bluetooth	4G,WIFI,Bluetooth	4G,WIFI,Bluetooth,Ethernet
Dimension(L*W*H)	167*146*54mm	206*190*71mm	281*167*93mm	348.4mm x 189.5mm x 95.7mm