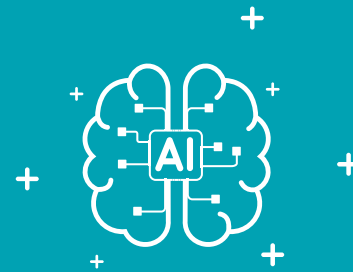


TECHNOLOGY LINE UP 2024



CONTENTS

Network Video Recorders

Network Cameras

HD Analog Recorders

HD Analog Cameras

Software Solutions

Network Accessories



An aerial night view of Las Vegas, Nevada, featuring a network of glowing white lines and nodes overlaid on the city's lights. The network is most prominent in the upper left and center, connecting various points across the city. In the foreground, the MGM Grand building is illuminated in green, with a sign that reads "MGM GRAND" and "ALTER YOUR REALITY DAVID COPPERFIELD". Other buildings in the background are lit up in various colors, including yellow, blue, and purple. The overall scene is a vibrant, high-tech representation of a modern city at night.

IDIS AI Solutions

Stronger Together

Innovating video technology for the future

Discover the expanded video technology range, born out of IDIS's acquisition of Costar. Following this exciting merger our combined resources, partner networks, and R&D expertise are delivering even more powerful end-to-end solutions for users globally, including major commercial, small to medium businesses, and critical infrastructure applications. Our combined range encompasses the latest AI-powered video analytics options, a choice of VMS, high performance NVRs, and a comprehensive choice of cameras, now including Costar multi-imagers. IDIS end-to-end solutions give you the benefits of plug-and-play installation, robust quality, rich functionality, and inherent cybersecurity to deliver on the IDIS promise of a low total cost of ownership (TCO) for end users, and successful on-budget projects for systems integrators.



"Stronger Together. Innovating for the Future."

COSTAR
TECHNOLOGIES, INC.

COSTAR
VIDEO SYSTEMS

COSTAR
HD

AV COSTAR

innotech



IDIS AI SOLUTIONS GRAND SLAM OF WINS!



IDIS AI Solutions



Edge AI Cameras



All-in-One AI Boxes



AI Boxes with VMS

IDIS WON PRESTIGIOUS SECURITY AWARDS
IN BOTH THE US AND UK FOR ITS
AI-POWERED PRODUCTS



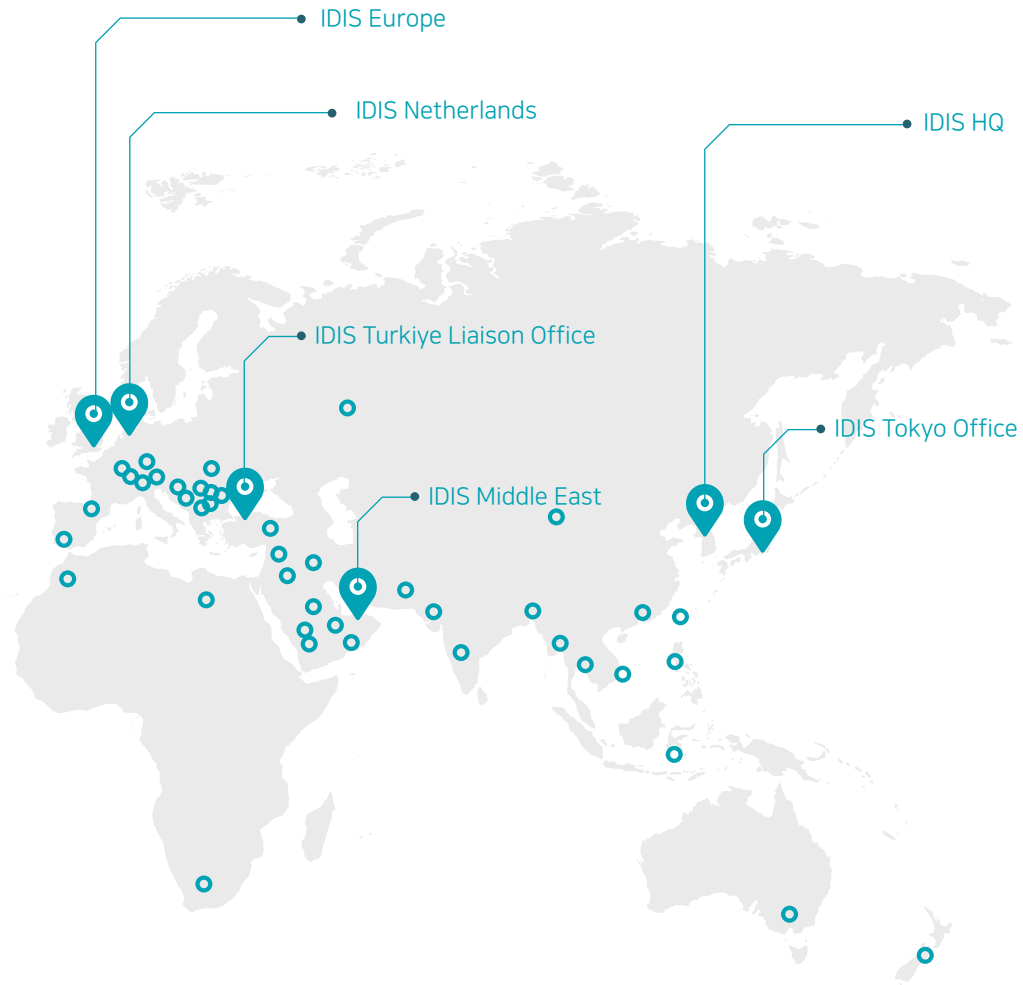
A WORLDWIDE PRESENCE



IDIS IS A GLOBAL SECURITY COMPANY THAT DESIGNS, DEVELOPS, AND MANUFACTURES VIDEO SOLUTIONS FOR A WIDE RANGE OF COMMERCIAL AND PUBLIC SECTOR MARKETS.

As the largest in-country video surveillance manufacturer in South Korea, with headquarters and manufacturing facilities outside Seoul, IDIS operates across 50 countries and 100+ strategic partners. IDIS is a world-leading surveillance solution provider with over two million recorders installed worldwide and over 17million cameras utilizing IDIS technology.

The IDIS Total Video Surveillance Solution exceeds the requirements of an increasingly demanding security landscape. IDIS provides the benefit of an end-to-end, highest-quality comprehensive video surveillance solution and delivers user-friendly, flexible, scalable innovation, able to meet every video surveillance need—all with unrivaled performance, quality, and low total cost of ownership.



CULTURE



OUR MISSION

Our mission is to contribute to a safer and more secure world by committing to innovation and fostering a culture of creativity.



OUR VISION

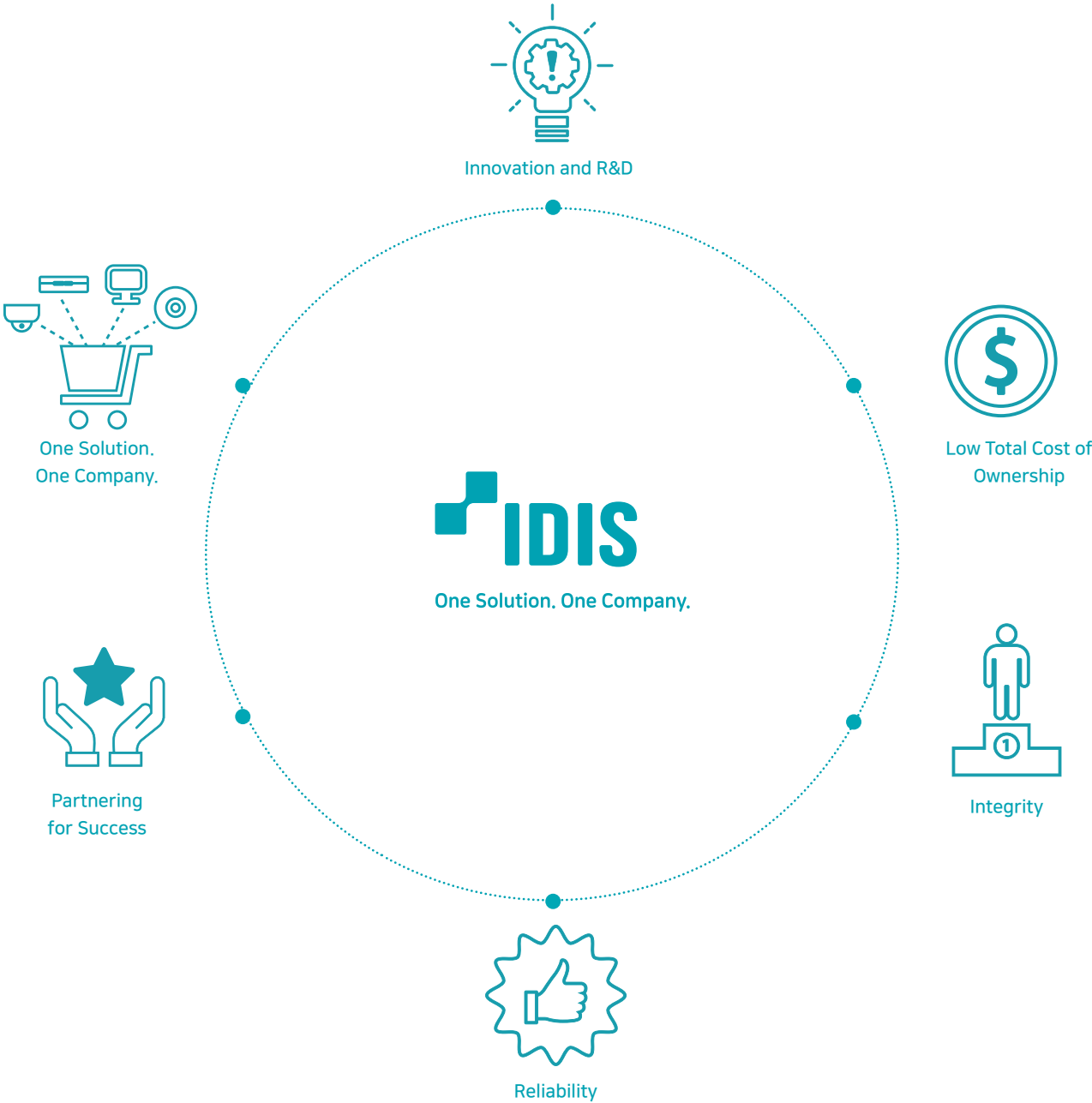
Our vision is to become the premier global security solutions specialist by providing the world's best, most innovative, and value-added video tech offerings and the most responsive customer service.



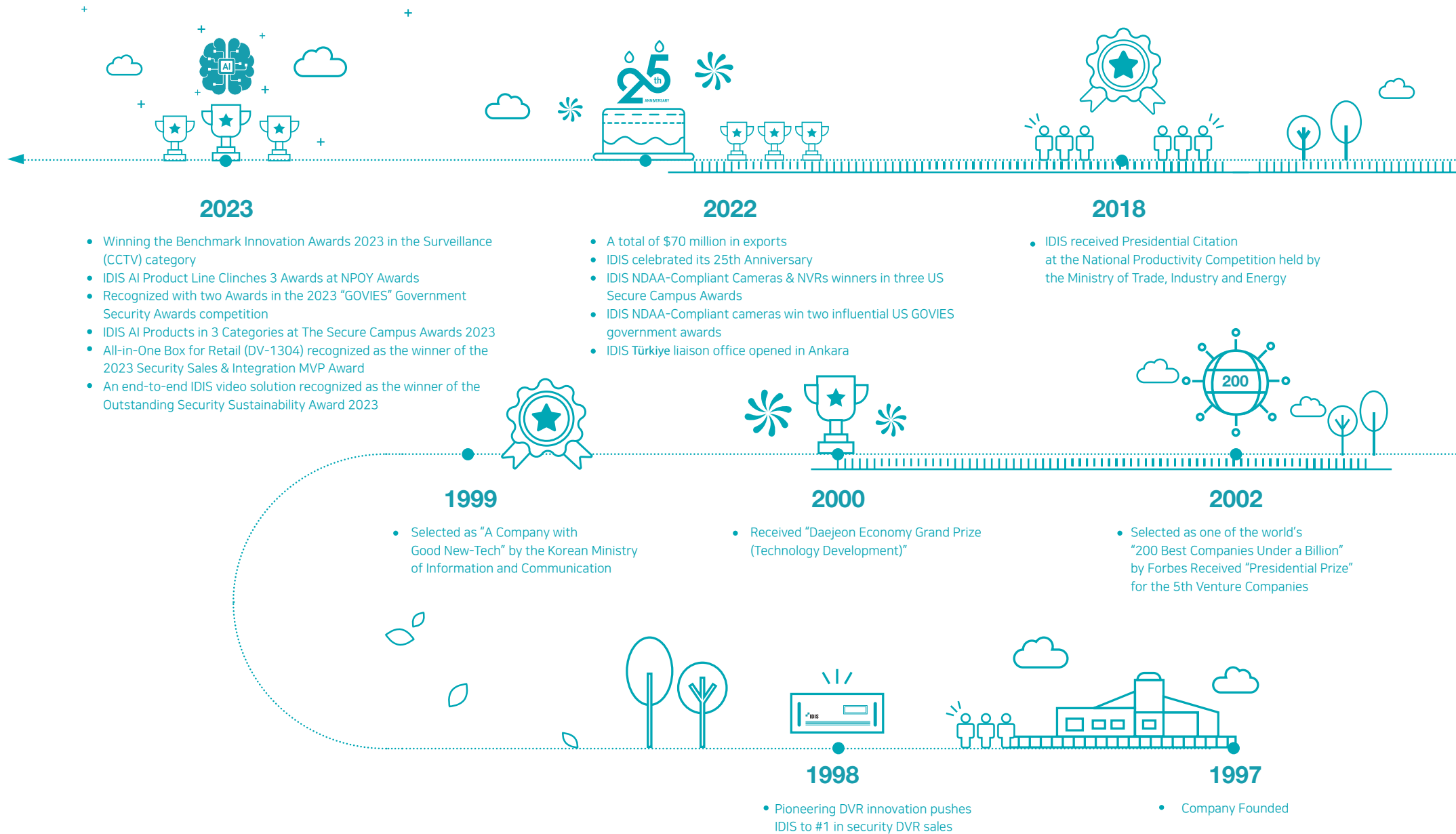
CORE VALUES



STRENGTHS



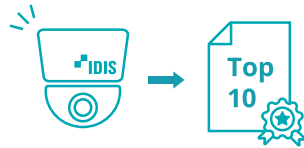
IDIS MILESTONES





2017

- IDIS received two esteemed World Class
- Product of Korea awards from the Ministry of Trade Industry and Energy IDIS
- Celebrated its 20th anniversary



2014

- Named Top 10 in the World for Video Surveillance by A&S



2013

- DirectIP launch recognized with 2013 Platinum Marcom Award
- IDIS launches its brand business and DirectIP at IFSEC International



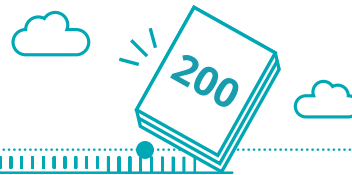
2012

- Selected as a "Good Company to Work For" by the Korea Economic Daily
- Europe headquarters established in London
- U.K. Sales reach over \$150 million



2003

- Obtained "No.1 Ranking of a KOSDAQ Company" at the 20th Daeshin Comprehensive Management Evaluation



2004

- Selected as one of the world's "200 Best Companies Under a Billion" by Forbes



2011

- Selected as "World Class 300" by the Ministry of Knowledge Economy
- Sales reach over \$100 million

TOTAL VIDEO SOLUTION PROVIDER

IDIS offers an end-to-end surveillance solution, designing, manufacturing, and supporting products and software under one roof, ensuring highest-quality, user-friendly, and scalable innovation.



SECURITY



One Solution. One Company.

IDIS designs, develops, manufactures, and supports its products and software all under one roof. For customers and partners, this means they can build a complete surveillance solution using products that seamlessly integrate from just one vendor. This simplifies the buying chain and provides local sales and technical support from a single vendor. Whether a large corporate enterprise, a retail chain, or single site, IDIS has a surveillance solution that meets the needs of an extensive range of

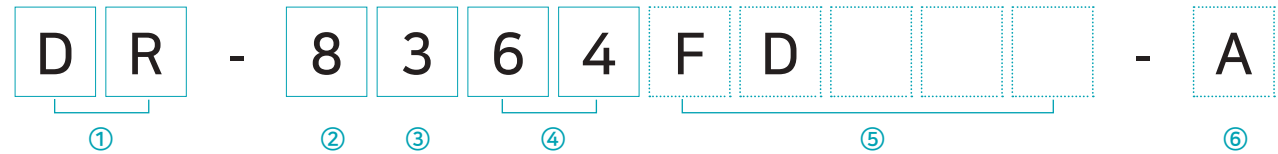
businesses. With a broad range of high- and ultra-definition IP cameras, four to 64 channel NVRs, monitors, network accessories, a choice of VMS, and our DirectCX line-up for customers looking to leverage existing coax cabling, IDIS has a solution that fits.



Made in **KOREA**

IDIS NAMING STRUCTURE

Network Video Recorder



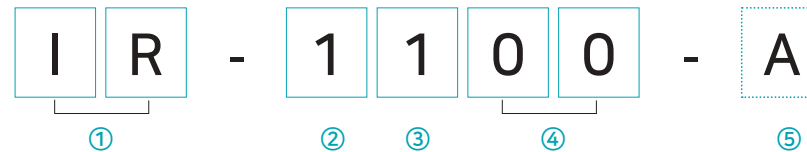
- ① **Product** DR : NVR
TR : DVR
- ② **Series** M : Mobile (Vehicle)
1 : Entry
2 : Quality
4 : Standard
6 : Expert
8 : Flagship
- ③ **Generation** 1~9
- ④ **Channel** 01~99 : 01~99Ch

⑤ **Extension**

NVR	
PSE Support	P
Failover	F
Redundant Power	D
Wireless Network	W
Hybrid	H
Compact	C
DVR	
PoC	P
RAID	R
Hybrid	H
Compact	C

⑥ **Renewal Version**

Pre-Installed VMS



- ① **Product** IR : Pre-installed VMS
(Installed with IDIS Solution Suite)
- ② **Series** 1~9
- ③ **Generation** 0 : Reserved
1~9
- ④ **Channel**
- ⑤ **Renewal Version**

IP WITHOUT THE PC

A Next Gen Video Surveillance Solution Based on an IP Framework

DirectIP's "IP without the PC" concept enables simple installation and configuration, allowing instant streaming once connected. Once connected to a network keyboard and mouse, DirectIP NVRs can setup and handle DirectIP cameras without a PC.





Direct IP[®]





NETWORK VIDEO RECORDERS

Make Your Surveillance Future Proof

Providing quality products and individualized services at competitive rates and more PoE capacity.







DR-1000 SERIES

DirectIP 1500 Series Full HD Recorder		
Model Name	DR-1504P-A	DR-1508P-A
	 	 
VIDEO		
Video Inputs	4 IP Channels	8 IP Channels
Max. Incoming Throughput	60Mbps	100Mbps
Supported Camera	DirectIP	DirectIP
Video Outputs	1 HDMI, 1 VGA	1 HDMI, 1 VGA
Display Resolution	1920 x 1200 , 1920 x 1080, 1680 x 1050, 1600 x 1200	1920 x 1200 , 1920 x 1080, 1680 x 1050, 1600 x 1200
Display Speed	Up to 120ips	Up to 240ips
RECORDING		
Max. Throughput	20Mbps, 120ips@8MP	40 Mbps, 240 ips@8MP
Recording Resolution	Up to 8MP (Depending on IP Camera)	Up to 8MP (Depending on IP Camera)
Video Compression	H.265, H.264	H.265, H.264
Intelligent Codec	Supported	Supported
Recording Mode	Time-lapse, Event, Pre-event, Panic	Time-lapse, Event, Pre-event, Panic
Trigger Event	Motion, Trip-zone, Tampering, Video Loss, System, Etc.	Motion, Trip-zone, Tampering, Video Loss, System, Etc.
PLAYBACK		
Performance	4 ch Full HD Synchronous Playback	4 ch Full HD Synchronous Playback
Search Mode	Time-lapse, Event Log	Time-lapse, Event Log
STORAGE		
HDD	SATA x1	SATA x1
NETWORK		
Client Connection	Fast Ethernet (Client) x 1	Fast Ethernet (Client) x 1
Video In Connection	Fast Ethernet (IP Camera) x4	Fast Ethernet (IP Camera) x8
Transmission Speed	20 Mbps	20 Mbps
PSE Power	PoE (IEEE 802.3at Class 4) Supported 4 Ports, 35W	PoE (IEEE 802.3at Class 4) Supported 8 Ports, 70W
Two-way Audio	-	-
INTERFACE		
Audio In / Out	-	-
Alarm In / Out	-	-
Alarm Reset In	-	-
Serial Interface	-	-
USB	USB 2.0 x 2	USB 2.0 x 2
GENERAL		
Operating System	Embedded Linux	Embedded Linux
Dimensions (W x H x D)	205mm x 44.5mm x 216.4mm (8.07" x 1.75" x 8.52")	205mm x 44.5mm x 216.4mm (8.07" x 1.75" x 8.52")
Unit Weight	1.2kg (2.65 lb) (with 1 HDD)	1.2kg (2.65 lb) (with 1 HDD)
Power Input	NVR Adaptor (Input : 100-240V~, 50/60Hz, 1.5A, Output : 48V , 1.35A)	NVR Adaptor (Input : 100-240V~, 50/60Hz, 2.5A, Output : 54V , 1.86A) - In countries using 200~240V such as UK NVR Adaptor (Input : 100-240V~, 50/60Hz, 2.5A, Output : 54V , 2.33A) - In countries using 100~127V such as US
Power Consumption	NVR: 48V , 1A, Max. 48W	54V~, 1.65A, 89W MAX
Approvals	KC, CE, FCC	KC, CE, FCC







* Maximum HDD capacity Will be updated as new HDD models become available.
For the most recent information, please check http://designtool.idisglobal.com/design_tool/product_compatibility.php

DR-2000 SERIES

Model Name	DirectIP 2500 Series H.265 4K Recorder			
	DR-2504P-B	NEW DR-2504P-C	DR-2508P-A	DR-2516P-A
VIDEO	 4K ULTRA HD NDA4 Compliant	 4K ULTRA HD NDA4 Compliant	 4K ULTRA HD NDA4 Compliant	 4K ULTRA HD NDA4 Compliant
Video Inputs	4 IP channels	4 IP channels	8 IP Channels	16 IP Channels
Max. Incoming Throughput	160Mbps	160Mbps	270 Mbps	320 Mbps
Supported Camera	DirectIP, AXIS, PANASONIC, ONVIF	DirectIP, AXIS, PANASONIC, ONVIF	DirectIP, AXIS, PANASONIC, ONVIF	DirectIP, AXIS, PANASONIC, ONVIF
Video Outputs	1 HDMI, 1 VGA	1 HDMI, 1 VGA	1 HDMI, 1 VGA	1 HDMI, 1 VGA
Display Resolution	HDMI : 3840 x 2160, 1920 x 1200, 1920 x 1080, 1680 x 1050, 1600 x 1200 / VGA : 1920 x 1200, 1920 x 1080, 1680 x 1050, 1600 x 1200			
Display Speed	Up to 120ips	Up to 120ips	Up to 240ips	Up to 480 ips
RECORDING				
Max. Throughput	70Mbps, 120ips@UHD	70Mbps, 120ips@UHD	140 Mbps, 240 ips @ UHD	180 Mbps, 480 ips@UHD
Recording Resolution	Up to 12 MP (Depending on IP Camera)	Up to 12 MP (Depending on IP Camera)	Up to 12 MP (Depending on IP Camera)	Up to 12 MP (Depending on IP Camera)
Compression	H.265, H.264	H.265, H.264	H.265, H.264	H.265, H.264
Recording Mode	Time-Lapse, Event, Pre-Event, Panic	Time-Lapse, Event, Pre-Event, Panic	Time-Lapse, Event, Pre-Event, Panic	Time-Lapse, Event, Pre-Event, Panic
Trigger Event	IDLA(Object Detection, Intrusion, Loitering, Line Crossing, Face Detection), BI(Exceed Occupancy Limit, Social Distancing, Mask Rule Violation, Queue Congestion), Motion, Trip-zone, Tampering, Video Loss, Audio Detection, Alarm In, Network Alarm, Text-in, System, Etc.			
PLAYBACK				
Performance	4ch Synchronous Playback 4ch 4K Playback	4ch Synchronous Playback 4ch 4K Playback	8ch Synchronous Playback 8ch 4K Playback	16ch Synchronous Playback 8ch 4K Playback
Search Mode	Time-lapse, Event Log, Text-in, Thumbnail, Metadata(via IDIS Center, IDIS Solution Suite)	Time-lapse, Event Log, Text-in, Thumbnail, Metadata(via IDIS Center, IDIS Solution Suite)	Time-lapse, Event Log, Text-in, Thumbnail, Metadata(via IDIS Center, IDIS Solution Suite)	Time-lapse, Event Log, Text-in, Thumbnail, Metadata(via IDIS Center, IDIS Solution Suite)
STORAGE				
HDD	SATA x 2, eSATA x1	SATA x 2, eSATA x 1, RAID 1 Supported	SATA x 2, eSATA x 1	SATA x 2, eSATA x1
NETWORK				
Client Connection	Gigabit Ethernet (Client) x 1	Gigabit Ethernet (Client) x 1	Gigabit Ethernet (Client) x 1	Gigabit Ethernet (Client) x 1
Video In Connection	Fast Ethernet(IP Camera) x4	Fast Ethernet(IP Camera) x4	Fast Ethernet(IP Camera) x8 + Gigabit Ethernet (Ext) x1	Fast Ethernet (IP Camera) x 8 + Gigabit Ethernet (Ext) x 1
Transmission Speed	50Mbps / 100Mbps(BRP Mode)	50Mbps / 100Mbps(BRP Mode)	50Mbps / 100Mbps (BRP Mode)	50 Mbps / 100 Mbps (BRP Mode)
PSE Power	PoE(IEEE 802.3at class 4) supported 4 ports, 50W	PoE(IEEE 802.3at class 4) supported 4 ports, 50W	PoE(IEEE 802.3at class 4) supported 8 ports, 100W	PoE(IEEE 802.3at class 4) supported 8 ports, 100W
INTERFACE				
Audio In / Out	Local(NVR) : - / 1RCA + 1HDMI IP Camera : 4 / 4 (Depending on IP Camera)	Local(NVR) : - / 1RCA + 1HDMI IP Camera : 4 / 4 (Depending on IP Camera)	Local(NVR) : - / 1RCA + 1HDMI IP Camera : 8 / 8 (Depending on IP Camera)	Local (NVR) : - / 1RCA + 1HDMI IP Camera : 16 / 16 (Depending on IP Camera)
Alarm In / Out	Local(NVR) : 4 / 1 IP Camera : 4 / 4 (Depending on IP Camera)	Local(NVR) : 4 / 1 IP Camera : 4 / 4 (Depending on IP Camera)	Local(NVR) : 4 / 1 IP Camera : 8 / 8 (Depending on IP Camera)	Local (NVR) : 4 / 1 IP Camera : 16 / 16 (Depending on IP Camera)
Alarm Reset In	-	-	-	-
Serial Interface	RS 232 (Terminal Block)	RS 232 (Terminal Block)	RS 232 (Terminal Block)	RS 232 (Terminal Block)
USB	USB 2.0 x 1, USB 3.0 x 1	USB 2.0 x 1, USB 3.0 x 1	USB 2.0 x 1, USB 3.0 x 1	USB 2.0 x 1, USB 3.0 x 1
GENERAL				
Operating System	Embedded Linux	Embedded Linux	Embedded Linux	Embedded Linux
Dimensions (W x H x D)	300 mm x 62 mm x 231 mm (11.8" x 2.4" x 9.1")	300 mm x 62 mm x 231 mm (11.8" x 2.4" x 9.1")	300 mm x 62 mm x 231 mm (11.8" x 2.4" x 9.1")	300 mm x 62 mm x 231 mm (11.8" x 2.4" x 9.1")
Unit Weight	2.2kg (4.9lb) (with 1 HDD)	2.2kg (4.9lb) (with 1 HDD)	2.3kg (5.1lb) (with 1 HDD)	2.3 kg (5.1 lb) (with 1 HDD)
Power Input	NVR Adaptor (Input : 100-240V AC, 50/60Hz, 1.5A, Output : 12V DC, 5A) PSE Adaptor (Input : 100-240V AC, 50/60Hz, 1.2A, Output : 48V DC, 1.35A)	NVR Adaptor (Input : 100-240V AC, 50/60Hz, 1.5A, Output : 12V DC, 5A) PSE Adaptor (Input : 100-240V AC, 50/60Hz, 1.2A, Output : 48V DC, 1.35A)	NVR Adaptor (Input : 100-240V AC, 50/60Hz, 1.5A, Output : 12V DC, 5A) PSE Adaptor (Input : 100-240V AC, 50/60Hz, 2.5A, Output : 54V DC, 2.33A)	NVR Adaptor (Input : 100-240V AC, 50/60Hz, 1.5A, Output : 12V DC, 5A) PSE Adaptor (Input : 100-240V AC, 50/60Hz, 2.5A, Output : 54V DC, 2.33A)
Power Consumption	NVR: 12V=, 2.2A, 26.4W PSE: 48V=, 1.04A, 50W MAX	NVR: 12V=, 2.2A, 26.4W PSE: 48V=, 1.04A, 50W MAX	NVR: 12V=, 2.2A, 26.4W PSE: 54V=, 1.85A, 100W MAX	NVR: 12V=, 2.2A, 26.4W PSE: 54V=, 1.85A, 100W MAX
Approvals	FCC, CE, KC	FCC, CE, KC	FCC, CE, KC	FCC, CE, KC

* Maximum HDD capacity will be updated as new HDD models become available.
For the most recent information, please check http://designtool.idisglobal.com/design_tool/product_compatibility.php

DR-6000 SERIES

DirectIP 6500 Series H.265 4K Recorder			
Model Name	DR-6508P	DR-6516P-A	DR-6532P-A
	 	 	 
VIDEO			
Video Inputs	8 IP Channels	16 IP Channels	32 IP Channels
Max. Incoming Throughput	270 Mbps	320Mbps	370 Mbps
Supported Camera	DirectIP, AXIS, PANASONIC, ONVIF	DirectIP, AXIS, PANASONIC, ONVIF	DirectIP, AXIS, PANASONIC, ONVIF
Video Outputs	2 HDMI	2 HDMI	2 HDMI
Display Resolution	HDMI : 3840 x 2160, 1920 x 1200, 1920 x 1080, 1680 x 1050, 1600 x 1200	HDMI : 3840 x 2160, 1920 x 1200, 1920 x 1080, 1680 x 1050, 1600 x 1200	HDMI : 3840 x 2160, 1920 x 1200, 1920 x 1080, 1680 x 1050, 1600 x 1200
Display Speed	Up to 240ips	Up to 480ips	Up to 960ips
RECORDING			
Max. Throughput	140Mbps, 240ips @ UHD	180Mbps, 480ips@UHD	230 Mbps, 960 ips @ UHD
Recording Resolution	Up to 12 MP (Depending on IP Camera)	Up to 12 MP (Depending on IP Camera)	Up to 12 MP (Depending on IP Camera)
Video Compression	H.265, H.264	H.265, H.264	H.265, H.264
Intelligent Codec	Supported	Supported	Supported
Recording Mode	Time-lapse, Event, Pre-event, Panic	Time-lapse, Event, Pre-event, Panic	Time-lapse, Event, Pre-event, Panic
Trigger Event	IDLA (Object Detection, Intrusion, Loitering, Line Crossing, Face Detection), BI(Exceed Occupancy Limit, Social Distancing, Mask Rule Violation, Queue Congestion), Motion, Trip-zone, Tampering, Video Loss, Audio Detection, Alarm In, Network Alarm, Text-in, System, Etc.		
PLAYBACK			
Performance	8 ch Synchronous Playback	16ch Synchronous Playback	32ch Synchronous Playback
Search Mode	Time-lapse, Event Log, Text-in, Thumbnail, Metadata (via IDIS Center, IDIS Solution Suite)	Time-lapse, Event Log, Text-in, Thumbnail, Metadata (via IDIS Center, IDIS Solution Suite)	Time-lapse, Event Log, Text-in, Thumbnail, Metadata (via IDIS Center, IDIS Solution Suite)
STORAGE			
HDD	SATA x 6, eSATA x 4, RAID 1 Supported	SATA x 6, eSATA x 4, RAID 1 Supported	SATA x 6, eSATA x 4, RAID 1 Supported
NETWORK			
Client Connection	Gigabit Ethernet (Client) x 1	Gigabit Ethernet (Client) x 1	Gigabit Ethernet (Client) x 1
Video In Connection	Gigabit Ethernet (IP Camera) x 8 + Gigabit Ethernet (Ext) x1	Gigabit Ethernet (IP Camera) x 16 + Gigabit Ethernet (Ext) x 1	Gigabit Ethernet (IP Camera) x 16 + Gigabit Ethernet (Ext) x 1
Transmission Speed	50Mbps / 100Mbps (BRP Mode)	50Mbps / 100Mbps (BRP Mode)	50Mbps / 100Mbps (BRP Mode)
PSE Power	PoE(IEEE 802.3at Class 4) Supported 8 Ports, 120 W	PoE (IEEE 802.3at Class 4) Supported 16 Ports, 200W	PoE (IEEE 802.3at Class 4) Supported 16 Ports, 200W
INTERFACE			
Audio In / Out	Local (NVR) : 1 RCA / 1 RCA + 2 HDMI IP Camera : 8 / 8 (Depending on IP Camera)	Local (NVR) : 1 RCA / 1RCA + 2HDMI IP Camera :16 / 16 (Depending on IP Camera)	Local (NVR) : 1 RCA / 1RCA + 2 HDMI IP Camera : 32 / 32 (Depending on IP Camera)
Alarm In / Out	Local (NVR) : 4 / 1 IP Camera : 8 / 8 (Depending on IP Camera)	Local(NVR) : 4 / 1 IP Camera : 16 / 16 (Depending on IP Camera)	Local (NVR) : 4 / 1 IP Camera : 32 / 32 (Depending on IP Camera)
Alarm Reset In	Yes	Yes	Yes
Serial Interface	RS 232 (Terminal Block), RS 485 (Terminal Block)	RS 232 (Terminal Block), RS 485 (Terminal Block)	RS 232 (Terminal Block), RS 485 (Terminal Block)
USB	USB 2.0 x 2, USB 3.0 x 1	USB 2.0 x 2, USB 3.0 x 1	USB 2.0 x 2, USB 3.0 x 1
GENERAL			
Operating System	Embedded Linux	Embedded Linux	Embedded Linux
Dimensions (W x H x D)	430mm x 88mm x 420mm (16.9" x 3.5" x 16.5")	430 mm x 88 mm x 412.8 mm (16.9" x 3.5" x 16.25")	430mm x 88mm x 420mm (16.9" x 3.5" x 16.5")
Unit Weight	6.75 kg (14.88 lb) (with 1HDD)	6.75 kg (14.88 lb) (with 1HDD)	6.75 kg (14.88 lb) (with 1HDD)
Power Input	AC 100-240 V, 50/60 Hz, 3.0 - 1.5 A	100-240V~, 50/60Hz, 4.0-2.0A	100-240V~, 50/60Hz, 4.0-2.0A
Power Consumption	100-240 V~, 50/60 Hz, 3.0-1.5 A, 250 W	100-240V~, 50/60Hz, 4.0-2.0A, 360W	100-240V~, 50/60Hz, 4.0-2.0A, 360W
Approvals	FCC, UL, CE, CB	FCC, UL, CE, CB	FCC, UL, CE, CB

* Maximum HDD capacity Will be updated as new HDD models become available.
For the most recent information, please check http://designtool.idisglobal.com/design_tool/product_compatibility.php

IDIS and NDAA Compliant

The National Defense Authorization Act

NDAA Summary

The John S. McCain National Defense Authorization Act (NDAA) for Fiscal Year 2019 was signed into law on August 13, 2018 and effective from August 2020. The law, specifically Section 889, prohibits federal agencies, their contractors and grant or loan recipients from procuring or using “telecommunications and video surveillance equipment or services” from specific Chinese companies as a “substantial or essential component of any system, or as critical technology as part of any system.” The NDAA ban includes telecommunications equipment produced by Huawei Technologies Company or ZTE Corporation, as well as video surveillance and telecommunications equipment produced by Hytera Communications Corporation, Hangzhou Hikvision Digital Technology Company, or Dahua Technology Company.





IDIS Equipment

IDIS provides NDAA compliant products, which includes solutions marketed to the US federal government, Department of Defense (DoD), and associated contractors. The following IDIS cameras and network video recorders (NVRs) do not use or deploy critical components or System-on-a-Chip (SOC) circuits produced by NDAA banned component vendors, making them compliant with the NDAA.



Made in **KOREA** | **NDAA**
Compliant

DR-8000 SERIES

		DirectIP 8500 Series H.265 4K Recorder	
		DR-8532D	DR-8564D
Model Name		 	 
VIDEO			
Video Inputs		32 IP Channels	64 IP Channels
Max. Incoming Throughput		370Mbps	540 Mbps
Supported Camera		DirectIP, AXIS, PANASONIC, ONVIF	DirectIP, AXIS, PANASONIC, ONVIF
Video Outputs		2 HDMI	2 HDMI
Display Resolution		HDMI : 3840 x 2160, 1920 x 1200, 1920 x 1080, 1680 x 1050, 1600 x 1200	HDMI : 3840 x 2160, 1920 x 1200, 1920 x 1080, 1680 x 1050, 1600 x 1200
Display Speed		Up to 960ips	Up to 1080ips
RECORDING			
Max. Throughput		230Mbps, 960ips@UHD	400 Mbps, 1920 ips@UHD
Recording Resolution		Up to 12MP (Depending on IP Camera)	Up to 12MP (Depending on IP Camera)
Video Compression		H.265, H.264	H.265, H.264
Recording Mode		Time-lapse, Event, Pre-event, Panic	Time-lapse, Event, Pre-event, Panic
Trigger Event		IDLA(Object Detection, Intrusion, Loitering, Line Crossing, Face Detection), BI(Exceed Occupancy Limit, Social Distancing, Mask Rule Violation, Queue Congestion), Motion, Trip-zone, Tampering, Video Loss, Audio Detection, Alarm In, Network Alarm, Text-in, System, Etc.	
PLAYBACK			
Performance		32ch Synchronous Playback	64ch Synchronous Playback
Search Mode		Time-lapse, Event Log, Text-in, Thumbnail, Metadata (via IDIS Center, IDIS Solution Suite)	Time-lapse, Event Log, Text-in, Thumbnail, Metadata(via IDIS Center, IDIS Solution Suite)
STORAGE			
HDD		SATA x 8, eSATA x 4, RAID 1, 5, 6, 10 Supported	SATA x8, RAID 1, 5, 10 Supported
NETWORK			
Client Connection		Gigabit Ethernet (Client) x 1	Gigabit Ethernet (Client) x 1
Video In Connection		Gigabit Ethernet (Video In) x 3, SFP (Video In) x 2	Gigabit Ethernet (Video In) x 3, SFP (Video In) x 2
Transmission Speed		50 Mbps / 100 Mbps (BRP Mode)	50 Mbps / 100 Mbps (BRP Mode)
PSE Power		-	-
INTERFACE			
Audio In / Out		Local (NVR) : 1 RCA / 1RCA + 2HDMI IP Camera : 32 / 32 (Depending on IP Camera)	Local (NVR) : 1 RCA / 1RCA + 2HDMI IP Camera : 64 / 64 (Depending on IP Camera)
Alarm In / Out		Local(NVR) : 16 / 4 IP Camera : 32 / 32 (Depending on IP Camera)	Local(NVR) : 4 / 1 IP Camera : 64 / 64 (Depending on IP Camera)
Alarm Reset In		Yes	Yes
Serial Interface		RS 232 (Terminal Block), RS 485 (Terminal Block)	RS232 (Terminal Block), RS485 (Terminal Block)
USB		USB 2.0 x 2, USB 3.0 x 1	USB 2.0 x 2, USB 3.0 x 1
GENERAL			
Operating System		Embedded Linux	Embedded Linux
Dimensions (W x H x D)		482.6mm x 88mm x 529.5mm (19" x 3.5" x 20.8")	482.6mm x 88mm x 529.5mm (19" x 3.5" x 20.8")
Unit Weight		12.6kg (27.8lb) (with 2 HDDs)	12.2kg (27.0lb) (with 2 HDDs)
Power Input		100-240V~, 50/60Hz, 8.0 - 4.0A	100-240V~, 50/60Hz, 8.0 - 4.0A
Power Consumption		100-240V~, 50/60Hz, 8.0 - 4.0A, 100W x 2	100-240V~, 50/60Hz, 8.0 - 4.0A, 145W x2
Approvals		FCC, UL, CE, CB, KC, PSE	FCC, UL, CE, CB, KC, PSE

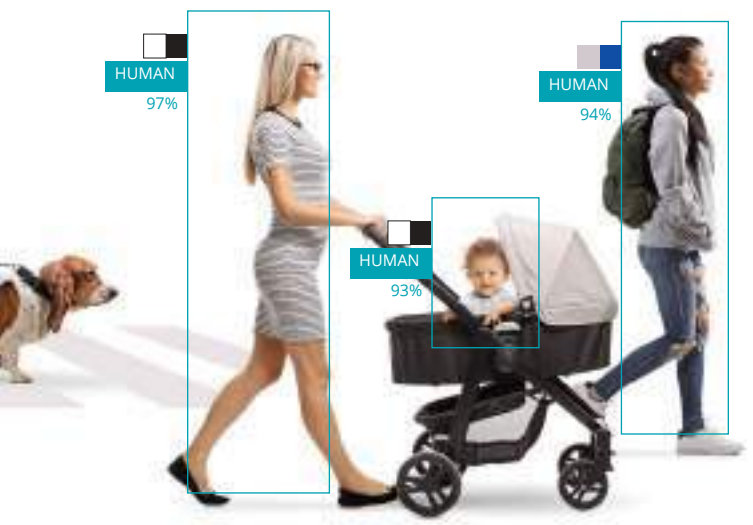
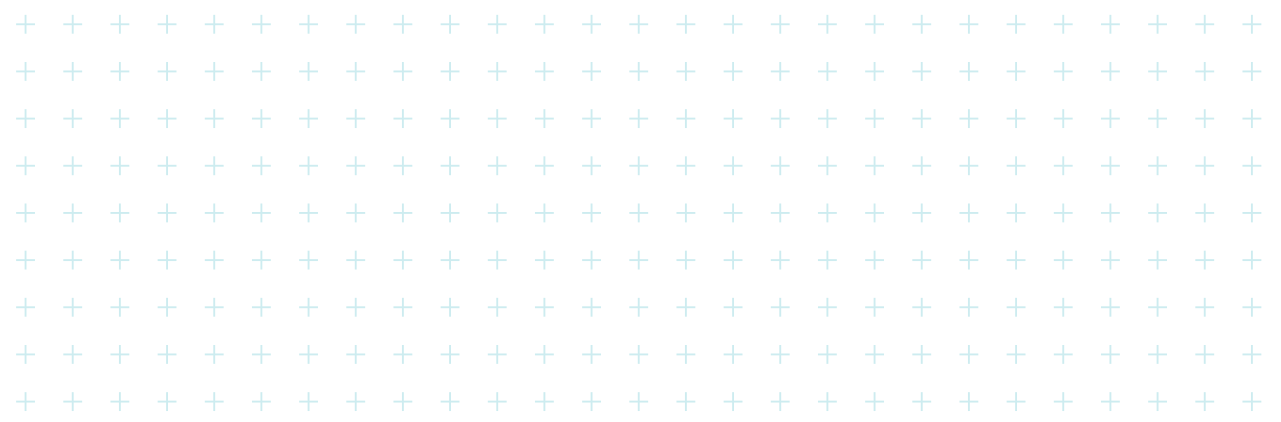
* Maximum HDD capacity Will be updated as new HDD models become available.
 * Establish NVR Failover system with standby DR-8364(FD). For the most recent information, please check http://designtool.idisglobal.com/design_tool/product_compatibility.php

IDIS AI SOLUTION

IDIS Deep Learning Analytics
(IDLA) Artificial Intelligence
optimized for video surveillance

IDLA represents a new paradigm for video surveillance,
leveraging artificial intelligence and deep learning
algorithms to perform previously labor-intensive tasks
with up to 98% accurate alarms and notifications.





Ensure Better Outcomes with The In-House Developed IDIS Deep Learning Engine

IDLA's accurate monitoring of images, events, and scenes enables smart searching with high accuracy and outstanding results.





Discover Effortless Analysis with Precise and Autonomous AI

Strengthen your security posture by staying ahead of the curve with our future-ready object classification solutions.

Object classification

Easy Setup Without Calibration

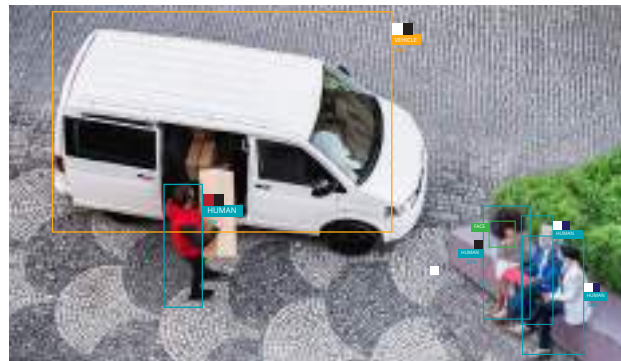
Our AI solutions offer hassle-free setup without the need for calibration. Installers and users benefit from maximum and minimum size settings for objects eliminating adjustments and tuning, enabling convenient and rapid deployment.

Revolutionary Reduction in False Alarms

Experience a significant improvement in false alarms caused by harmless environmental factors such as small animal movements, swaying branches or heavy rain. Our Deep Learning Engine has been in-house trained to minimize false alarms, providing more reliable detection and faster responses.

Improved Light Variation Detection and Low-Light Performance

Say goodbye to change to changing and low-light challenges. Our AI solutions boast enhanced detection capabilities, effectively recognizing variations in light due to changing conditions and improving performance in low-light environments.



Intrusion

Swiftly identifies unauthorized access, ensuring real-time security alerts and rapid response capabilities.



Line Crossing

Instantly detects and alerts to any breach, ensuring vigilant perimeter security with real-time notifications.



Loitering

Enhances security by identifying and responding to prolonged presence in monitored areas, ensuring a proactive approach to security.



Face Detection

Used for various surveillance purposes, self-enrollment for access control, and personalized user experiences without infringing on privacy rights.



Fall Detection

Transform safety in healthcare settings with cutting-edge monitoring alerts to slips, trips and falls ensuring a rapid first aid response.



Abandoned Object Detection

Immediate identification and alerts that ensure a proactive response to potential threats, prioritizing safety.

AI IN THE BOX WITH IDIS SOLUTION SUITE



NEW

DV-3200-B | **NDA** Compliant | **IDIS** SOLUTION SUITE®

Enterprise-class AI in the Box Server

- AI in the Box with IDIS Solution Suite
- Compatible with IDIS Deep Learning Analytics (IDLA)
- 2U rack mount chassis



IDIS Deep Learning Analytics (IDLA)

Powered by the
IDIS Deep Learning Engine

- Industry-leading accurate deep learning engine
- Object classification suitable for surveillance applications
- Simple configuration and zero calibration

